



**FOR TRADE &
SERVICES
GENERAL
CONTRACTING
HEAVY AND LIGHT
VEHICLE RENTAL
CONSTRUCTION**

SEMO AL-MUKHAYAM CO. LTD



SERVING ALL REGIONS OF IRAQ FROM
OIL SERVICES & TRANSPORTATION
GENERAL CONSTRUCTION WORK
MACHINERY RENTAL
LIGHT VEHICLE RENTAL
MATERIAL SUPPLY
ELECTRICAL SERVICE
TANK AND PIPELINE
INSPECTION SERVICES
PRIVATE SECURITY SERVICES
INSULATION
STEEL STRUCTURE
PIPING AND CIVIL
BLASTING AND PAINTING

ADDRESS: IRAQ, BASRAH ALSRAJI
EMAIL: semo.almukhayam@gmail.com
Website: [http://semo-al-mukhayam-co-
ltd.business.site/](http://semo-al-mukhayam-co-ltd.business.site/)

Mobile Contact: +964 782 691-9991
+964 783577-0470



شركة سمو المخيم

للتجارة العامة والخدمات والمقاولات

INTRODUCTION

Honor our company to introduce its biography, its work and its material ability to it so for us and for your acquaintance and dealing precisely in present and future. To express about our business in confidence and trust to form for you a clear image about what is important the enterprises which its completion and abilities which it has in enforcement. We hope that to serve you in every field. To make the best of us to build a new Iraq in this important stage.

THE TARGETS

The targets of our company renew the areas contracts and construction, the common investments, transport and prepared in all parts of our lovable country and reach by it to level with development and civilization, with all counties in the world.

To get our company to first degree identity, and it is working to contribute seriously and by live conscience and efforts of generous don't miser in it on our people in our new Iraq... and desire from us to compensate for years of deprivation ... And participation in the Reconstruction of infrastructure in all parts of our Iraq precious by a sincere manpower sincere. Perhaps God make us ready to sacrifice in dearly and cheap in performance this blessed duty.

**FOR TRADE &
SERVICES
GENERAL
CONTRACTING
HEAVY AND LIGHT
VEHICLE RENTAL**



ADDRESS: IRAQ, KARBALA HEYY FARIS

EMAIL: semo.almukhayam@gmail.com

Website: <http://semo-al-mukhayam-co-ltd.business.site/>

Mobile Contact: +964 782 691-9991

+964 782 854-8866



COMPANY INFORMATION

Semo Al-Mukhayam Co Ltd. Has taken away leading role towards financing plenty of Productions to domestic and foreign markets and execution pantry of projects. Our company is dominant entity on import and marketing plenty of machines, equipment, devices, materials in most of scopes such as (Electric, Industry, Agriculture, Civil and Alchemy) besides to idealistic execution for the work and projects.

Our company and much experience, given us commercial feature known throughout the Iraq and given us opportunities in initiating cooperation with renowned world manufactures. Our company has the super class in classification level of Iraq companies for general trading.

Our company has been registered in most of ministries. Professional consultants in numerous fields (Engineering, economic, legal)

Our comprises a group of expert engineers, who are consider as key persons for electrical and mechanical as well as civil jobs plus other works which are related to these jobs. Were destroyed and we are called by various ministries to help with the reconstruction. Our Engineers worked for over two years rebuilding Iraq facilities and services. They were worked too hard and challenge all the difficulties like the shortage in spare parts, without support from any company, this challenge creates good experience for our engineers.

Due to perfection and accurate achievement, our company has gotten many certifications of evaluations and recommendations from different official sectors such as ministries, establishments, and companies.



FOR TRADE & SERVICES GENERAL CONTRACTING HEAVY AND LIGHT VEHICLE RENTAL



ADDRESS: IRAQ, KARBALA HEYY FARIS

EMAIL: semo.almukhayam@gmail.com

Website: <http://semo-al-mukhayam-co-ltd.business.site/>

Mobile Contact: +964 782 691-9991

+964 782 854-8866



شركة سمو المخيم

للتجارة العامة والخدمات والمقاولات

1.0 SAFETY POLICY STATEMENT

1.1 Objective

The objective is to conduct construction projects in a safe, effective, and efficient manner. Through a combination of concerned management, responsible and knowledgeable supervision, and will train employees, we will be able to provide a safe and healthful work environment.

1.2 Goals

The goal of this safety plan is to construct each project with zero accidents and/or incidents that could result in injury or property damage. To accomplish the overall goals of this program all subcontractors must provide employees with a safe and healthful work environment. It can be accomplished by minimizing risks and economic losses through training and planning.

1.3 Policy Statement

.3.1 Safety is paramount to the successful completion of all projects. It is towards this end that this safety plan is an integral part of each project.

.3.2 Onsite supervision shall be responsible for the actions of those they supervise, maintaining safe and healthy working conditions in their areas of responsibility, and strictly enforcing all safety and health policies and regulations. All employees shall comply with these rules and regulations.

.3.3 Subcontractors shall comply with the requirements of this plan, provisions contained within the contract document and all applicable rules and regulations as set forth in. As well as all additions and revisions thereto, to include all applicable local requirements.

.3.4 Should there be a conflict the most stringent requirement shall apply.



**FOR TRADE &
SERVICES
GENERAL
CONTRACTING
HEAVY AND LIGHT
VEHICLE RENTAL**



ADDRESS: IRAQ, KARBALA HEYY FARIS

EMAIL: semo.almukhayam@gmail.com

Website: <http://semo-al-mukhayam-co-ltd.business.site/>

Mobile Contact: +964 782 691-9991

+964 782 854-8866



شركة سمو المخيم

للتجارة العامة والخدمات والمقاولات

2.0 DEFINITIONS

2.1 EMPLOYEES

Workers employed by the company or any subcontractors.

2.2 INJURY AND ILLNESS PREVENTION PLAN Written plan developed and implemented by persons and the subcontractor to ensure a safe and healthful place of employment.

2.3 PROJECT FOREMAN

Employees designated by the subcontractors, as a first line supervisor.

2.4 PROJECT MANAGER

Project manager employed by, and assigned by, Semo Al-Mukhayam company and subcontractor to manage a specific project.

2.5 PROJECT SUPERINTENDENT

Project manager employed by, and assigned by, Semo Al-Mukhayam company and subcontractor to manage a specific project.

2.6 PPE

Personal Protective Equipment. Equipment designed to provide an employee with some degree of protection against incidental or accidental injury. Personal Protective Equipment is not designed nor intended to replace or take the place of Engineered Safety Controls.

2.7 SITE SAFETY REPRESENTATIVE

Subcontractor designated representative(s) responsible for promoting health and safety policies. The person shall be on site when work is in progress.

2.8 SUBCONTRACTOR

Any individual, firm, co-partnership, corporation, or combination thereof who has entered a contract with Semo Al-Mukhayam company or their subcontractor for a particular project, and whose employees are actively performing such work at the Project Sites.



FOR TRADE & SERVICES GENERAL CONTRACTING HEAVY AND LIGHT VEHICLE RENTAL



ADDRESS: IRAQ, KARBALA HEYY FARIS

EMAIL: semo.almukhayam@gmail.com

Website: <http://semo-al-mukhayam-co-ltd.business.site/>

Mobile Contact: +964 782 691-9991

+964 782 854-8866



3.0 ACCIDENT/INJURY MANAGEMENT

3.1 General Overview

- .1.1 All employees of Semo Al-Mukhayam company and Employees of subcontractors or their subcontractors shall comply with the following:**
- .1.2 All accidents / incidents resulting in employee injury or property damage shall be reported to the Site Safety Representative. All accidents resulting in serious injuries or illnesses occurring on project sites shall be thoroughly investigated by the injured employee's supervisor, Site Safety Representative and Project Superintendent.**
- .1.3 The Site Safety Representative will complete all specific accident investigation reports as required by the contract and this manual.**
- .1.4 The Site Safety Representative and all involved parties will fully cooperate with Semo Al-Mukhayam company and its representatives in the investigations.**

3.2 Accident Investigation

- .2.1 The Site Safety Representative shall complete the Accident Investigation form provided in this manual and submit to the Health and Safety Manager within 24 hours of any injury.**
- .2.2 Investigation reports of accident or injuries requiring medical treatment (other than on site First Aid) should include medical treatment forms and completed First Report of injury forms.**
- .2.3 Copies of all accident investigation documentation shall be submitted to the Semo Al-Mukhayam company Health and Safety Manager.**



FOR TRADE & SERVICES GENERAL CONTRACTING HEAVY AND LIGHT VEHICLE RENTAL



ADDRESS: IRAQ, KARBALA HEYY FARIS

EMAIL: semo.almukhayam@gmail.com

Website: <http://semo-al-mukhayam-co-ltd.business.site/>

Mobile Contact: +964 782 691-9991

+964 782 854-8866



4 .0 RESPONSIBILITIES

4.1 General Overview

- .1.1 All person employed by Semo Al-Mukhayam company, and all subcontractor employees will work to prevent accident.
- .1.2 Supervisors and the Site Safety Representative are responsible for safety and risk control training and instruction for their employees.
- .1.3 The prevention of accidents and protection of property should receive management's top priority, support, and participation.

4 .2 GENERAL CONDITIONS

.2.1 Project Management shall:

- Provide a safe environment where employee can perform high quality work
- Use safety planning as a tool to prevent injury to persons and loss of property
- Provide for inspections to locate and abate unsafe conditions and practices before they result in bodily injury or loss of property
- Project the public and property adjacent to the project(s)
- Educate and train employees through:
 - . New hire safety orientation
 - . Weekly Safety Meetings
- Task specific Safety Training, construction safety practices, trenching safety, confined space entry, etc.)
- Mandatory personal protective equipment (PPE) policy
- Injury reporting and record
- Using accident investigation information to abate deficiencies and eliminate any additional losses



FOR TRADE & SERVICES GENERAL CONTRACTING HEAVY AND LIGHT VEHICLE RENTAL



ADDRESS: IRAQ, KARBALA HEYY FARIS

EMAIL: semo.almukhayam@gmail.com

Website: <http://semo-al-mukhayam-co-ltd.business.site/>

Mobile Contact: +964 782 691-9991

+964 782 854-8866



شركة سمو المخيم للتجارة العامة والخدمات والمقاولات

4.3 PROJECT MANAGER

.3.1 The Project Manager shall:

- Be responsible for assuring that the requirements of this Safety Plan are fulfilled
- Review site safety performance at weekly Progress Meetings
- Participate in periodic job walks to review safety activities and site conditions
- Assist in accident/incident investigations

4.4 SITE SAFETY REPRESENTATIVE

.4.1 The Site Safety Representative shall:

- Conduct site specific safety orientation for all new employees and for all subcontractor employees.
- Conduct daily site audits
- Correct any unsafe conditions or acts encountered
- Investigate all Accidents

.4.2 The Site Safety Representative Shall possess knowledge of, and be responsible for, all applicable Safety Standards and site polices.

4.5 PROJECT SUPERINTENDENT

.5.1 The Project Superintendent shall:

- Promote total job safety with all employees, subcontractors, vendors, and visitors
- Be responsible for the implementation and execution of this Safety Plan on the jobsite
- Monitor subcontractor adherence to safety requirements
- Assist in accident investigations

4.6 PROJECT FOREMEN/LEADSMEN

.6.1 The Project Superintendent shall:

- Set a good example for employees
- Using per-task planning, instruct workers in safe work practices and methods to prevent injury, damage to property and loss of productive time
- Supply and enforce the use of personal protective equipment
- Assist in accident investigations Assure that proper first aid treatment is administered to any injured employee.

FOR TRADE & SERVICES GENERAL CONTRACTING HEAVY AND LIGHT VEHICLE RENTAL



ADDRESS: IRAQ, KARBALA HEYY FARIS

EMAIL: semo.almukhayam@gmail.com

Website: <http://semo-al-mukhayam-co-ltd.business.site/>

Mobile Contact: +964 782 691-9991

+964 782 854-8866



4 .7 EMPLOYEES

.7.1 Each Employee shall:

- Comply with Semo Al-Mukhayam Safety Plan
- Use all required safety equipment and devices
- Report and unsafe condition to their supervisor or the Site Safety Representative
- Maintain a clean and safe work area
- Follow the Code of Safe Work Practices Report injuries to supervision immediately-

4 .8 SUBCONTRACTORS

.8.1 Each and every subcontractor shall be responsible for accident prevention and implementation of this Safety Plan for their personnel.

.8.2 Subcontractors Shall designate a site safety representative. the safety representative shall possess knowledge of all-applicable safety standards and site policy and have the authority, without risk to job, to correct any problem related to safety. If the subcontractor has 40 or more employees, the safety representative shall be dedicated with no other duties. If the subcontractor has less than 40 employees, the safety representative may have other duties if safety takes precedence over his other duties.

.8.3 Subcontractors shall furnish all safety equipment, to include personal protective equipment, at no cost to the worker. As per the Safety Plan it shall be used.

4 .9 SUBCONTRACTOR EMPLOYEES

.9.1 Every Employee shall:

- Comply with this Safety Program
- Use all required safety devices
- Report any unsafe condition to their supervisor or the Site Safety Representative
- Maintain a clean and safe work area
- Follow the sites Code of Safe Work Practices Report injuries to supervision immediately-

FOR TRADE & SERVICES GENERAL CONTRACTING HEAVY AND LIGHT VEHICLE RENTAL



ADDRESS: IRAQ, KARBALA HEYY FARIS

EMAIL: semo.almukhayam@gmail.com

Website: <http://semo-al-mukhayam-co-ltd.business.site/>

Mobile Contact: +964 782 691-9991

+964 782 854-8866



شركة سمو المخيم

للتجارة العامة والخدمات والمقاولات

5.0 RECORD KEEPING AND FILES

5. 1 The Site Safety Representative shall maintain a master or central file for safety and health related documentation on the jobsite.
5. 2 The owner and its Representative have the right to review all documentation at any time upon request. the subcontractor shall give full cooperation during these reviews.
5. 3 The following documentation shall be in the safety files:
- A written Injury and Prevention Plan
 - Jobsite safety audits / inspection reports
 - Accident investigation reports.

6.0 SAFETY MEETINGS & TRAINING REQUIREMENTS

- . 6. 1 General Overview
- .1.2 The Site Safety Representative shall conduct and / or assist with weekly safety meetings and ongoing training.
- . 6. 2 Indoctrination (initial) Safety Training:
- .2.1 All new employees shall be properly trained in hazard recognition before starting to work this should include, but is not limited to:
- This Safety Plan Policies and Requirements
 - Emergency Procedures
 - Personal Protective Equipment
 - Housekeeping
- .6. 3 Toolbox Safety Meeting:
- .3.1 The Site Safety Representative shall conduct weekly safety meetings with all employees working on the construction site. The meeting shall be documented with each attendee's signature, topics of discussion and person conducting the meeting's name. The meeting shall be held at the same time and day each week.
- . 6. 4 Weekly Progress Meetings:
- .4.1 Safety shall have a prominent portion of the agenda to discuss the previous week's safety issues and to discuss the current week's activities.

FOR TRADE & SERVICES GENERAL CONTRACTING HEAVY AND LIGHT VEHICLE RENTAL



ADDRESS: IRAQ, KARBALA HEYY FARIS

EMAIL: semo.almukhayam@gmail.com

Website: <http://semo-al-mukhayam-co-ltd.business.site/>

Mobile Contact: +964 782 691-9991

+964 782 854-8866



شركة سمو المخيم

للتجارة العامة والخدمات والمقاولات

7.0 EMERGENCY PROCEDURES

7.1 Prior to starting any project the nearest medical clinic shall be located and directions to the clinic shall be provided to the Semo Al-Mukhayam Health and Safety Manager and all supervisory personnel on site. Emergency Phone Numbers for fire, Police, and hospital will be posted at the jobsites as well as any maps showing direction to the closest hospital.

7.2 Any employee requiring medical attention shall be transported to the clinic by the quickest means possible. Serious or life-threatening injuries should be transported by ambulance.

8.0 JOBSITE AUBITS

8.1 Jobsite Audits

.1.1 The Site Representative shall conduct daily jobsite inspections.

.1.2 Corrective action for life threatening or serious conditions will be completed immediately. All work in these conditions shall stop until corrective action has been completed.

9.0 GENERAL SAFETY & HEALTH PRACTICES

9.1 General Overview

.1.1 Every employee of this company and all subcontractors shall comply with the following requirements in accordance with this Safety Plan and all applicable safety regulations. Before any definable feature of work or any new task, Semo Al-Mukhayam shall conduct.

a written Activity Hazard Analysis that discusses what safety measures, methods, equipment, and personal protective equipment will be used for that task. The Semo Al-Mukhayam Safety

Representative and the client Safety Representative shall sign the AHA which must be adhered to during the task. If the task changes, the AHA shall be revisited, adjusted, and resigned accordingly. A copy of all AHA's shall be provided by Semo Al-Mukhayam to the client Safety Representative.

The Semo Al-Mukhayam Safety Representative shall maintain a Safety Deficiency Log that tracks health and safety deficiencies on the jobsite and dates of completion/to be completed. Agreement and signature shall be made by made by the Semo Al-Mukhayam Safety Representative and the client Safety Representative. Biweekly a copy of the Safety Deficiency Log shall be provided to the client Safety Manager. Semo Al-Mukhayam Safety Representative shall also provide audits/inspection of equipment, including ladders, scaffolds, fall protection equipment, heavy equipment, cranes, etc. These inspections shall be documented in writing (typically utilizing a checklist) and a copy provided to the Client Safety Representative.

.1.2 All employees shall use protective equipment prescribed by this Safety Manual. These requirements are not all-inclusive but are intended to be a minimum standard.

**FOR TRADE &
SERVICES
GENERAL
CONTRACTING
HEAVY AND LIGHT
VEHICLE RENTAL**



ADDRESS: IRAQ, KARBALA HEYY FARIS

EMAIL: semo.almukhayam@gmail.com

Website: <http://semo-al-mukhayam-co-ltd.business.site/>

Mobile Contact: +964 782 691-9991

+964 782 854-8866



شركة سمو المخيم
للتجارة العامة والخدمات والمقاولات

9.2 .6 CLOTHING

. 6. 1 Suitable Clothing for construction shall be worn on all sites. shirtsleeves shall be 4 inches or greater in length. Pants shall be full length.

9 .3 HEALTH & SANITATION

3. 1 Drinking Water

1.1 An ample of potable drinking water shall be on the project site consumption of the employees.

1.2 Individual water bottles or disposable drinking cups shall be provided at each site.

3. 2 Wash Station

2.1 A wash station with potable water shall be provided at each project site for use by the employees as needed and at break time.

3. 3 Toilet Facilities

3.1 Where existing toilet facilities are not available or functioning a portable toilet shall be provided at a ratio of 1 toilet for each 20 employees. A wash station should be provided next to the toilet(s).

9 .4 FALL PROTECTION

4.1 Employees exposed to the potential fall distance of 1.8 meters or more a distance where serious or fatal injury exists, shall be protected by means of a fall protection system.

4.2 Employees working at heights above 1.8 meters requiring the use of Personal Fall Arrest System (PFAS) shall be trained in the recognition of the hazard and the use and care of the PFAS.

2.1 PFAS shall consist of:

- . Full body harness
- . Shock absorbing lanyards.

4.3 Components that are damaged, deteriorated or have subjected to shock load shall be removed from service and destroyed.

4.4 Body Harnesses and Lanyards shall be properly stored at the end of each work shift and when not in use. Harnesses and lanyards should not be stored in gang boxes or toolboxes.

4.5 Employees working outside approved guardrails or work platforms shall be protected by Personal Fall Arrest System.

**FOR TRADE &
SERVICES
GENERAL
CONTRACTING
HEAVY AND LIGHT
VEHICLE RENTAL**



ADDRESS: IRAQ, KARBALA HEYY FARIS

EMAIL: semo.almukhayam@gmail.com

Website: <http://semo-al-mukhayam-co-ltd.business.site/>

Mobile Contact: +964 782 691-9991

+964 782 854-8866



شركة سمو المخيم
للتجارة العامة والخدمات والمقاولات

9.5 LADDERS

- 5.1 All ladders on the project should have a rated capacity of not less than 115 Kilograms.
- 5.2 Portable ladders shall be placed on a suitable base, will have clear and easy access at top and bottom, and be placed at an angle so the horizontal distance from the top support to the foot is one-quarter (4 to 1 ratio) the working length of the ladder.
- 5.3 Portable ladders used to access an upper landing shall either extend 1 meter above the landing surface or be provided with grab rails.
- 5.4 All straight ladders and extensions ladders should be secured at the top and, where practical, at the bottom to prevent slipping or displacement. Extension ladders shall not be split.
- 5.5 Ladders shall be inspected prior to each use. Defective or damage ladders shall be taken out of service and removed from the project. Side rails and steps shall not be painted or covered with any opaque covering.
- 5.6 Step or folding ladders shall not be used as leaning ladders and should be used only in the open and locked position.
- 5.7 Ladders shall have non-conductive side rails where there is the possibility of meeting any electrical source.
- 5.8 The platform and top step of any folding ladder shall not be used as a step.
- 5.9 Objects that restrict the use of both hands shall not be carried in the climber's hands.
- 5.10 Ladders shall not be spliced together to form longer sections.



FOR TRADE &
SERVICES
GENERAL
CONTRACTING
HEAVY AND LIGHT
VEHICLE RENTAL



ADDRESS: IRAQ, KARBALA HEYY FARIS

EMAIL: semo.almukhayam@gmail.com

Website: <http://semo-al-mukhayam-co-ltd.business.site/>

Mobile Contact: +964 782 691-9991

+964 782 854-8866

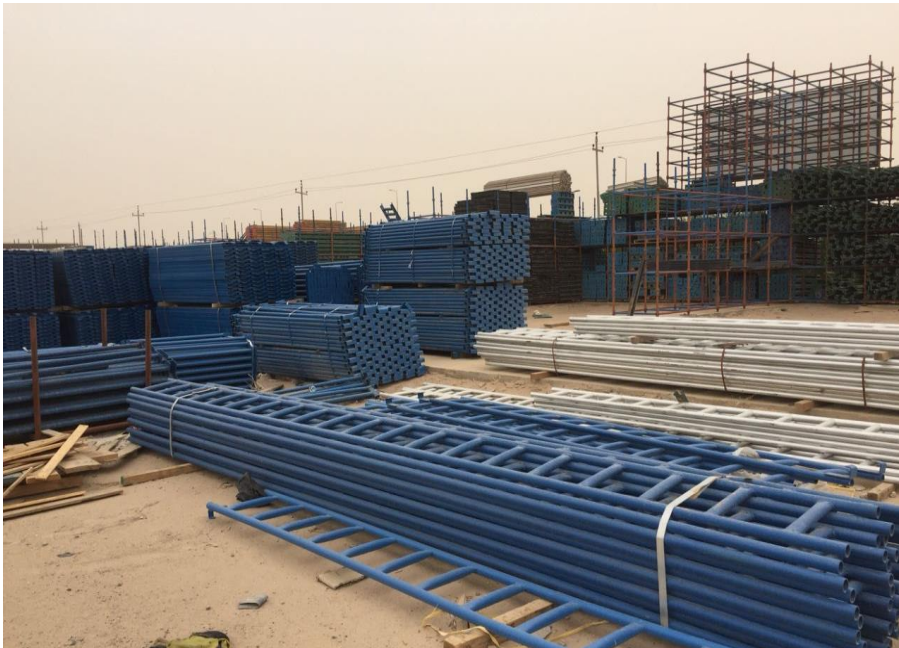


شركة سمو المخيم

للتجارة العامة والخدمات والمقاولات

9.6 SCAFFOLDING

- 6.1 Construction, maintenance, use and disassembly of all scaffolding shall be under the direction of a person trained in the erection of that type or style of scaffold.
- 6.2 Prior to use, the Site Safety Representative or job foreman shall inspect all scaffolding.
- 6.3 Scaffolds and component parts shall be maintained in a safe condition. Any scaffold, or component weakened and/or damaged from any cause shall immediately be replaced.
- 6.4 Scaffolds and their component shall be capable of supporting four (4) times the maximum intended working load.
- 6.5 Ladders or makeshift devices shall not be used to increase the working height of scaffolds.
- 6.6 scaffolds shall be erected on sound, ridged footing: capable of carrying the maximum intended load without settling or displacement.
- 6.7 An access ladder or equivalent safe access should be provided.
- 6.8 Guardrails shall be installed on all scaffolds over 2 meters in height.
- 6.9 Scaffolds between 1 and 2 meters in height, with a maximum dimension of 1.5 meters in either direction shall have guardrails installed.
- 6.10 Platforms should be tightly planked for the entire width of the scaffold except for necessary access opening.



**FOR TRADE &
SERVICES
GENERAL
CONTRACTING
HEAVY AND LIGHT
VEHICLE RENTAL**



ADDRESS: IRAQ, KARBALA HEYY FARIS

EMAIL: semo.almukhayam@gmail.com

Website: <http://semo-al-mukhayam-co-ltd.business.site/>

Mobile Contact: +964 782 691-9991

+964 782 854-8866



**FOR TRADE &
SERVICES
GENERAL
CONTRACTING
HEAVY AND LIGHT
VEHICLE RENTAL**



ADDRESS: IRAQ, KARBALA HEYY FARIS

EMAIL: semo.almukhayam@gmail.com

Website: <http://semo-al-mukhayam-co-ltd.business.site/>

Mobile Contact: +964 782 691-9991

+964 782 854-8866



شركة سمو المخيم

للتجارة العامة والخدمات والمقاولات

10.0 CODE OF SAFE WORK PRACTICES

10. 1 All employees are expected to know and observe the following general Safety Rules.

- . No one under the influence of alcohol or illegal drugs will be allowed on the site.
- . No unruly behavior of any kind will be allowed.
- . No loose or frayed clothing, cut-offs, or shorts.
- . No sandals, sports shoes, or soft or badly worn footwear shall be worn.
- . Shirts with sleeves will be always worn.
- . Hard hats will be always worn.
- . Protective equipment, face masks, face shields. Goggles, earplugs are to be used as needed.
- . Approved safety glasses shall be worn where required. Welding hoods shall be used during all welding by welders.
- . Hearing protection shall be worn when required.
- . Rubber gloves and rubber boots are required when working with concrete.
- . Bend or remove all nails from scrape or waste lumber and concrete forms when removing the forms.
- . Keep work areas always clean.
- . Replace guardrails or missing floor-opening covers.
- . Report unsanitary / unsafe conditions immediately to supervision.
- . Do not tamper with electrical equipment, machinery, air, or water lines; report al defective equipment to supervision.
- . Do not entry any excavation greater than 1.5 meters unless properly stored and only after the site safety Representative has inspected the excavation.
- . Tie off and/or have proper bearing on all ladders.
- . Do not work above or below others.
- . Clean up all liquid spills immediately.
- . Correct any unsafe condition that may be a hazard to you or other employees in the area.
- . Do not throw materials or tools from elevated heights.
- . Do not ride on mobile equipment such as forklifts, cranes, backhoes, etc. unless a seat is designed for use on the equipment.
- . Do not ride a hook or on suspended load of a crane.
- . Report damage to scaffolds or supporting structures immediately.
- . Know where all emergency exits are located.
- . Follow all No Smoking rules.



**FOR TRADE &
SERVICES
GENERAL
CONTRACTING
HEAVY AND LIGHT
VEHICLE RENTAL**



ADDRESS: IRAQ, KARBALA HEYY FARIS

EMAIL: semo.almukhayam@gmail.com

Website: <http://semo-al-mukhayam-co-ltd.business.site/>

Mobile Contact: +964 782 691-9991

+964 782 854-8866



شركة سمو المخيم

للتجارة العامة والخدمات والمقاولات

1- Fuel station

We did the fuel station start foundation of land and civil work means the excavation and backfilling until the finishing now this fuel station work and done in 2017.

. Objectives of the Project

- Implementing a cost-effective promotional strategy that will maximize awareness for the quality of petrol station and facilities; - Aiming at exceeding the customer's expectations; - Providing High-quality petrol station at minimized cost

Architectonic composition the design being vertically oriented incorporates the use of horizontal elements to both contrasts with the verticality and to bring the whole composition to human scale. The Balcones on the building façade shall also assist in sun shading to minimize heat gain and therefore improve human comfort.

Color choice Color choice was mainly be determined by the existing buildings within the surrounding to ensure that the proposed building integrates well with the environment. A Working circulation for any car using the petrol station.

the number of users that be occupying the space during operation is about 50 users including the clients, attendants, administrators, and caretakers.

Fire fighting

in case of the accident. In this project, no fire accident is likely to occur since electricity distribution is well designed, and all the fuel pump was on high quality. In case of fire accident, there is provision of firefighting equipment (fire extinguishers, fire cabinet, etc.). Fire alarm, Automatic fuses were also provided, and emergence exit are provided. The extinguishers should be regularly inspected and maintained; the personnel of the building must be trained on their use.

14 Traffic control

In this project, no traffic jam is likely to occur due to the fact of entering and exit in petrol station is well designed.

16. Description of all Planned Activities and all Materials to be used

The project shall employ the tried and tested mode of construction with reinforced foundations and slabs supported by similarly reinforced beams and columns as per calculations done. Walls openings and a pitched roof were complete the building envelop. The materials to be used are:

Retaining walls: the reinforced concrete walls done to avoid the collapsing of the soil wall in basement floor and lower ground floor, masonry with reinforced concrete column retaining wall done to secure the wall near the road accessing the lower ground floor and the south wall near the ground floor. To avoid the humidity, the layer of a tar (Damp Proof Membrane) will be put in place before the construction of any retaining wall. Foundations: reinforced concrete pads supporting columns, a ground beam linking the columns, and supporting the basement floor slab. The Slabs: reinforced concrete cast into temporary metal formwork. The floors finished with floor tiles. Structural Framework: were of reinforced concrete cast into metal timber

FOR TRADE & SERVICES GENERAL CONTRACTING HEAVY AND LIGHT VEHICLE RENTAL



ADDRESS: IRAQ, KARBALA HEYY FARIS

EMAIL: semo.almukhayam@gmail.com

Website: <http://semo-al-mukhayam-co-ltd.business.site/>

Mobile Contact: +964 782 691-9991

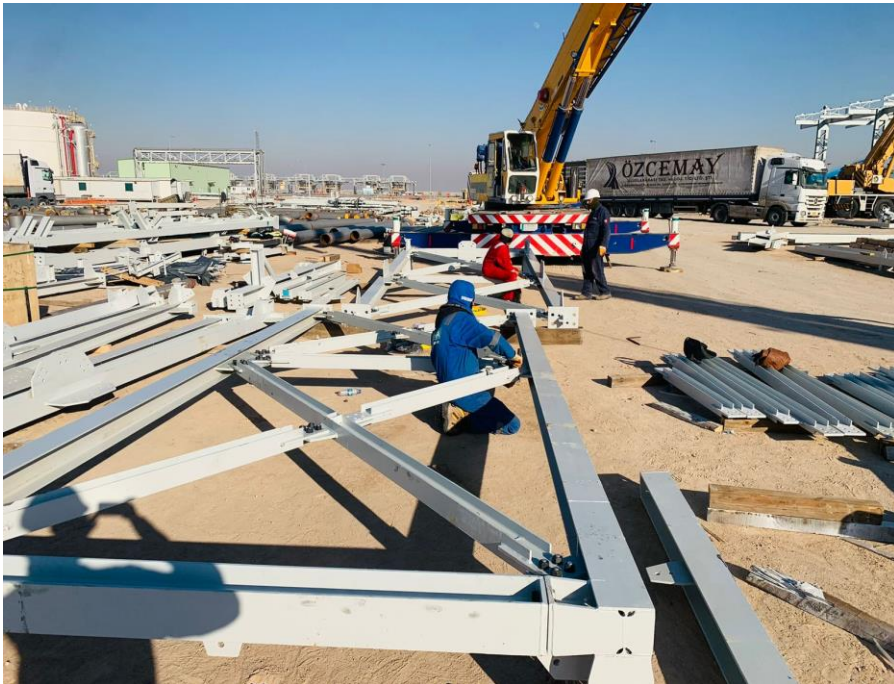
+964 782 854-8866



شركة سمو المخيم

للتجارة العامة والخدمات والمقاولات

formwork. Walling: the walls made of hollow concrete blocks made on site using a manual block-making machine. These blocks were bonded with mortar. In wet areas the walls were tiled, all other areas had their walls painted. Ceilings: the ceilings were of the painted upper floor slab for the basement and lower ground floor, but for the remaining floors the Gypsum ceiling shall be used. 9 Roof: the reinforced concrete roof was used, gutters were of similar material, while down pipes and their accessories were of PVC. Openings: the main doors were aluminum with frosted glass while the interior doors were paneled timber doors. Windows were of aluminum frames with 5mm thick tinted glass to reduce heat gain. Electricals: the standard electrical cabling was taken through PVC conduits. All lighting fixtures were energy saving. Plumbing: all water including grey and black channeled through approved PPR pipes. Water storage tanks were installed above the roof. Groundwater was conveyed in public stormwater drainage as per the detailed master plan for Nyarugenge District. The water storage tank was of reinforced concrete. Site Works: the boundary wall had a masonry foundation, concrete block walling and live fence in some areas. Access into the site was through a metallic gate. The parking was paved with paving blocks and bounded by painted concrete Krebs. Landscaping was consisting of green grass, selected trees, and small monuments along walkways.



FOR TRADE &
SERVICES
GENERAL
CONTRACTING
HEAVY AND LIGHT
VEHICLE RENTAL



ADDRESS: IRAQ, KARBALA HEYY FARIS

EMAIL: semo.almukhayam@gmail.com

Website: <http://semo-al-mukhayam-co-ltd.business.site/>

Mobile Contact: +964 782 691-9991

+964 782 854-8866



شركة سمو المخيم للتجارة العامة والخدمات والمقاولات

2- Pipeline

in the Nahrwan project we did the pipeline with Aljwomerah company, and we did a 10-kilometer pipeline there our work was high quality according to company specifications.

1.0 SCOPE 2.0 ENGINEERING 3.0 INSTALLATION WORKS 3.1

Equipment 3.2 Site preparation and fencing 3.3 Trench excavation and backfilling 3.4 Pipeline construction 3.5 Reinstatement 4.0 SAFETY 5.0

DOCUMENTATION 1. defines the minimum requirements for the engineering, materials, erection, quality requirements, inspection, testing, documentation, safety implementation of the onshore pipelines. The work includes the preparation of all procedures, furnishing of labor, materials, tools and equipment and the performance of all operations necessary for safe installation and subsequent operation of the pipeline. Below listed, detailed installation work method will be prepared and submitted to Client, before the works can be carried out: • Setting out, • Fencing, • Construction of access roads, • Topsoil strip, • Earth works and dewatering, • Trench excavation and backfilling, • Crossing of existing services, • Pipe receipt, storage and handling, • Pipe stringing, • Pipe welding and NDT, • Field joint coating and coating repair, • Pipeline lowering-in, • Pipeline tie-ins, • Cathodic Protection, Ground Bed Installation, • Safety, • Reinstatement. The Contractor shall follow the contractual documents including the project specifications, national or international standards, drawings, and applicable codes. The latest edition (if not stated otherwise) of these documents, including all parts and amendments, current at the time Contract award, shall apply and form an integral part of this procedure.

2 The Contractor shall prepare contingency plans for equipment breakdown, which could completely or temporarily stop the installation operations.

2. ENGINEERING The Contractor shall carry out all site engineering work including review of all documents required for the detailed engineering. Contractor shall provide clear and detailed engineering calculations and drawings. Drawings showing Contractor's proposed installation methods, sequences and construction aids shall be produced. The calculations and drawings shall address, but not limited to, the following: - Geotechnical calculations, associated drawings for temporary works such as access roads, trench support systems, if required, piling and dewatering systems, - Detailed drawings showing the proposed method of crossing construction of existing roads and services, - Excavation stability calculations, - Detailed calculations for the pipeline stresses during lowering-in operations, - Drawing of the site layout, including proposed storage areas of pipes, fittings, excavated material and fuel spillage containment, - Drawing showing the proposed sequence of the lowering-in/tie-in operations, - As Built drawings

3. INSTALLATION WORKS

FOR TRADE & SERVICES GENERAL CONTRACTING HEAVY AND LIGHT VEHICLE RENTAL



ADDRESS: IRAQ, KARBALA HEYY FARIS

EMAIL: semo.almukhayam@gmail.com

Website: <http://semo-al-mukhayam-co-ltd.business.site/>

Mobile Contact: +964 782 691-9991

+964 782 854-8866



شركة سمو المخيم

للتجارة العامة والخدمات والمقاولات

3.1 EQUIPMENT All equipment required for the performance of the work shall be in full working order and good condition. Stationary mechanical equipment shall be always fitted with drip trays. Main equipment to be supplied are Side boom pipe layers, welding machines, beveling machines, excavators, bulldozers, scrapers, cranes, transport equipment. The lowering-in equipment shall have the capability to safely lower the pipeline into the excavated trench. All equipment proposed shall be in good working condition and will have a valid certification. Machines without current calibration certificates shall not be used. Contractor shall execute the works in a manner consistent with good and safe construction practice.

3.2 SITE PREPARATION and FENCING Prior to the commencement of the work, Contractor shall carry out a pre-entry survey to agree and record with the Client, the existing condition of areas where work is to be carried out or access to be provided. Site preparation consists of the setting out, fencing, construction of access roads and topsoil strip. Temporary access roads shall be constructed using compacted well graded granular material. Granular material shall only be obtained from selected and approved quarries with valid licenses. Service crossings over roads, pipelines, cables, drains or other services shall be capable of withstanding all construction and further traffic loads. The service shall be clearly fenced off such that access across the service is only used for construction purposes. Roads shall always be maintained in good condition. Topsoil and other surface materials over the right of way (ROW) area, shall be stripped to a depth of 300 mm or as agreed with Client, over the full width of the site to be affected by the construction works. They will be located either to one side of the working width, in such a way not to affect the further pipe erection works, or to a designated outside storage area. Surface materials shall be kept separate from other spoil and free from the passage of vehicles and plant to facilitate their replacement in the original position after completion of the works. The working width of ROW shall be decided and graded considering allowing the passage and working of construction vehicles and pipe stringing and laying. Where necessary, the ground shall be dewatered during earthworks, to avoid the dust problem to the neighbor areas and residents.

3.3 TRENCH EXCAVATION and BACKFILLING Contractor shall ensure that all works relating to stripping of surface materials, trench excavation and storage of excavated materials is appropriate and keep the excavation to the minimum practical to reduce the extent of disturbance. Slopes of excavations shall be formed to avoid the collapse. For deeper excavations, which cannot be stabilized, specific trench support systems or steel sheet piling might be used. All exposed surfaces shall be maintained in a stable condition to avoid erosion of excavated surfaces and storage areas. Trenches shall be levelled to provide even and continuous support to the pipeline, and any organic materials, stones, boulders, or obstructions shall be removed and disposed. Suitable excavated material, other than

FOR TRADE & SERVICES GENERAL CONTRACTING HEAVY AND LIGHT VEHICLE RENTAL



ADDRESS: IRAQ, KARBALA HEYY FARIS

EMAIL: semo.almukhayam@gmail.com

Website: <http://semo-al-mukhayam-co-ltd.business.site/>

Mobile Contact: +964 782 691-9991

+964 782 854-8866



شركة سمو المخيم

للتجارة العامة والخدمات والمقاولات

surface materials, if suitable for backfill, shall be stockpiled at one side of the trench and after pipe laying works completed, backfilled to the trench. Pipe will be covered by soft sand at 200 mm layers to protect the pipe coating from any damage. It shall be thoroughly compacted by hand rammers. The marker tape shall be laid after 400 mm of backfill above top of pipe shall have the warning "GAS/OIL PIPELINE BELOW". After laying marker tape, the remaining excavated material shall be returned to the trench at 300 mm layers and thoroughly compacted by mechanical vibrators/rammers. No vegetable or other perishable material shall be filled into the trench. Special care shall be taken to prevent stones or other debris which may cause damage to the pipeline corrosion coating from meeting the pipe. Where it is considered by Client, that the excavated material is unsuitable as backfill, suitable material from the nearest source accepted by Client shall be imported, in sufficient quantities to cover the pipe to the required depth. Whole excavations shall be kept clear of water during the progress of the works. Silting or contamination of ditches, drains or ground water shall be avoided. Well point de-watering and stabilizing equipment shall be used when required and after agreed with Client. It is the responsibility of Contractor to positively locate all known services within the working areas, by hand dug trial pits. Excavation shall be carried out in accordance with the "Trench Excavation and Backfilling. Exposed lengths of pipelines and cables shall be always supported, and particular care shall be taken to support the trench sides, to avoid the damage to services. Road and rail crossings shall be installed in accordance with the drawings. Reinforced concrete protective slabs shall be placed over the pipeline, at service crossings. The concrete slabs shall be a minimum of 150 mm thick and shall extend beyond the pipe, for at least 150 mm on either side. The slabs shall extend at least three meters either side of the service being crossed and shall be separated from the pipeline by at least 150 mm of fine-grained material. Slab settlement shall be minimized by careful selection of backfill material and thorough material compaction. On completion of backfilling operations, permanent surface warning tiles shall be placed on the pipelines to indicate their points of intersection with other services. Drainage systems shall be installed within the construction area if necessary to protect existing waterways and to control storm water runoff. The systems shall be designed to discharge water to a collecting pit. If required, oil separator and/or sediment traps shall be installed in the drains, to prevent the contamination of ground water. 3.4 PIPELINE CONSTRUCTION Pipe Storage and Handling: The handling of all materials, fittings, and equipment (i.e., loading, hauling, unloading, racking, storing, assembling) shall be performed in a safe manner, such that they shall be protected from damage or loss. Contractor shall repair or replace all materials; fittings or other equipment damaged and/or lost resulting from its operations. Pipe being transported shall be carried

FOR TRADE & SERVICES GENERAL CONTRACTING HEAVY AND LIGHT VEHICLE RENTAL



ADDRESS: IRAQ, KARBALA HEYY FARIS

EMAIL: semo.almukhayam@gmail.com

Website: <http://semo-al-mukhayam-co-ltd.business.site/>

Mobile Contact: +964 782 691-9991

+964 782 854-8866



شركة سمو المخيم

للتجارة العامة والخدمات والمقاولات

in shaped cradles or trailers, lined with protective rubber or similar sheeting. Pipes shall be adequately secured in such a manner as to prevent damage to the pipes and/or anti-corrosion coating.

4 In order to prevent damage, pipes and fittings shall not be placed directly on the ground but shall be raised on proper timbers. Pipe Stringing: Pipes shall be offloaded and strung along the route of the pipeline, not parallel or perpendicular to trench direction but with some degrees angle. At intervals, sufficient gaps shall be left between pipes to allow access across the working width as required. Pipes and fittings shall not be placed directly onto the ground. Pipe Welding and NDT: Welding and NDT shall be carried out in accordance with "Welding Method . The inside of each pipe and fitting shall be examined for cleanliness and all foreign matter shall be removed by having a brush type cleaning disc, pulled through each length just before fitting up. End protection caps shall be retained in position, as long as practicable. The pipeline shall always be kept free of foreign material and water, and when work is not in progress, the open ends of pipes, fittings and pipeline shall be securely capped. Field Joint Coating/Coating Repair: Prior to lowering the pipeline into the trench, the weld joints with missing coating will be coated as per specifications and the pipeline shall be holiday detected. Any coating repairs required, shall be carried out in accordance with the specification. Pipeline Lowering-in: The pipeline shall be lowered into the trench as soon as possible after the trench has been excavated. Special care shall be shown to ensure that the pipe coatings will not be damaged during the lowering-in and the pipeline is not laid in an overstressed condition. Any damage to the pipe coating indicated by holiday detection prior to, or during the lowering operation shall be repaired as early as possible. Cathodic Protection: The cathodic protection system shall be installed as per the specification and related standards. Pipe tracking and identification: Contractor shall have and follow a pipe tracking system and a Pipeline Weld Log. This log shall be daily recorded by the Contractor and reviewed by the Client's representative. This log shall include the following information as a minimum for each joint. • Field joint number, • Pipe number, • Weld number, • Weld details, • Details of any repairs, • Joint lengths, • Cumulative length, • Pipeline kilometer post coordinates, • Anode installations. The system shall be capable of rapid identification of records and adequate means for correlation between this data and the general documentary records of the work. Ground markers shall be erected at all tracks, road and watercourse crossings, field boundaries and elsewhere as required to identify the pipeline(s) and indicate its position.

3.5 REINSTATEMENT works to all disturbed areas shall be carried out in accordance with the requirements of the Contract, to the complete satisfaction of Client.

5 Reinstatement works shall be completed in accordance with a program developed by the Contractor and accepted by the Client

FOR TRADE & SERVICES GENERAL CONTRACTING HEAVY AND LIGHT VEHICLE RENTAL



ADDRESS: IRAQ, KARBALA HEYY FARIS

EMAIL: semo.almukhayam@gmail.com

Website: <http://semo-al-mukhayam-co-ltd.business.site/>

Mobile Contact: +964 782 691-9991

+964 782 854-8866



شركة سمو المخيم

للتجارة العامة والخدمات والمقاولات

prior to work commence. Seeding and planting shall, if necessary, be delayed until the appropriate season. Where land has been graded to a lower elevation, to facilitate the passage of construction equipment, to minimize pipe bending or for any other reason, then such land shall be restored to its original contour, unless otherwise agreed by Client or the landowner. Areas used for storage area and/or site facilities, shall be cleared and all temporary works and construction debris shall be removed and disposed of off-site. Following re-contouring of the construction site and restoration of surface materials, all work shall be performed manually. After restoration of surface materials, access to all vehicles, plant and equipment will not be allowed, except light equipment required for stabilization. All spoil heaps shall be levelled, and the land shall be reinstated to its original condition. The landfill shall be reinstated with material previously excavated from the area. The fencing, indicating the work area shall be removed after the completion of all operations. Roads, tracks, and footpaths shall be permanently reinstated to a condition equivalent to that existing before the commencement of the works and to the requirements of the Contract and the satisfaction of Client. Dykes, sheet piling, channels and other temporary works installed during the construction of the pipeline shall be removed and areas will be restored to their original condition. In the absence of any specific information, the restoration shall be carried out in a manner satisfactory to Client. All auxiliary structures such as bridges, culverts, sheet piling, posts, signs, temporary parking areas, etc. which were erected or installed by Contractor as temporary measures, shall be removed, unless acceptance of Client has been obtained. Any damage which occurs during the removal of any Temporary Works to the pipe, adjacent facilities, or adjoining land, shall be repaired or reinstated to the satisfaction of Client.

4. SAFETY Contractor shall conduct his work in accordance with the Health, Safety and Environment (HSE) requirements of the Contract. Contractor shall undertake the work with due care, in compliance with Client's requirements, which include, but are not limited to the following: • Traffic congestion shall be minimized, • Agreed transport routes at ROW and out of ROW to be established, • Road access shall be limited and controlled, • Parking areas shall be identified prior to commencement of the work and controlled, • In agreement with the Client, accommodation place for workers and staff will be arranged at Site or off the Site, • Contractor will arrange a safe and appropriate transport between accommodation and the work place, • Where accommodation is provided, the facilities will be regularly checked as part of a health and safety inspection, • Appropriate safety and warning signs shall be used to give warning of pipeline works and hazards, • Dust, noise and vibration limits will be controlled in accordance with legislation, planning consents and with due concern for the local authorities and residents, • The construction site will be regularly checked as part of a health and safety inspection, • A

FOR TRADE & SERVICES GENERAL CONTRACTING HEAVY AND LIGHT VEHICLE RENTAL



ADDRESS: IRAQ, KARBALA HEYY FARIS

EMAIL: semo.almukhayam@gmail.com

Website: <http://semo-al-mukhayam-co-ltd.business.site/>

Mobile Contact: +964 782 691-9991

+964 782 854-8866



شركة سمو المخيم

للتجارة العامة والخدمات والمقاولات

restriction on working hours except for critical work may be imposed,

- Appropriate measures shall be taken for disposal of rubbish and under no circumstances shall rubbish be left uncontrolled,
- The temporary site facilities will be subject to health and safety inspection
- , • Compliance with Client's permit to work system is mandatory,
- Contractor will comply with permits for treatment and discharge of pipeline hydrotest water,
- Emergency arrangements shall be in place in case of an accident at Site,
- First aid and medical facilities will be available at Site.

6 5. DOCUMENTATION Throughout the pipeline installation activities, accurate records shall be kept and transmitted directly to Client's office daily. These reports shall include, but not be limited to, the following:

- Date and location of pipeline activities for each discipline (trench excavation, pipe weld, joint coating, laying, backfill, etc.)
- Log of activities
- Personnel available on site
- Equipment available on site
- Outline of any equipment failures
- Number of Pipe Joints welded (total and daily)
- Length of pipeline (total and daily) laid
- Cumulative length and length of line left to complete
- A brief description of present progress and weather
- Summary of any repairs made to equipment or to the pipeline
- Outline of any other problems encountered.
- Accidents/LTI Reporting
- Comments Upon completion of the work, an as-built survey shall be carried out and recorded on as-built drawings. Satisfactory results shall be documented prior to acceptance of the work. Final documentation shall describe the as-built status and shall include, but not limited to the following:
- NDT reports
- List of qualified welders
- Weld radiographs
- Weld repair reports
- Pipe tracking records
- Consumables test certificates
- As-built survey including weld/pipe / welder number, pipe level, and position etc.
- Land damage records.
- Restatement drawings and photographs.
- As-built drawings
- Permanent material certificates
- Daily logs/reports

FOR TRADE & SERVICES GENERAL CONTRACTING HEAVY AND LIGHT VEHICLE RENTAL



ADDRESS: IRAQ, KARBALA HEYY FARIS

EMAIL: semo.almukhayam@gmail.com

Website: <http://semo-al-mukhayam-co-ltd.business.site/>

Mobile Contact: +964 782 691-9991

+964 782 854-8866



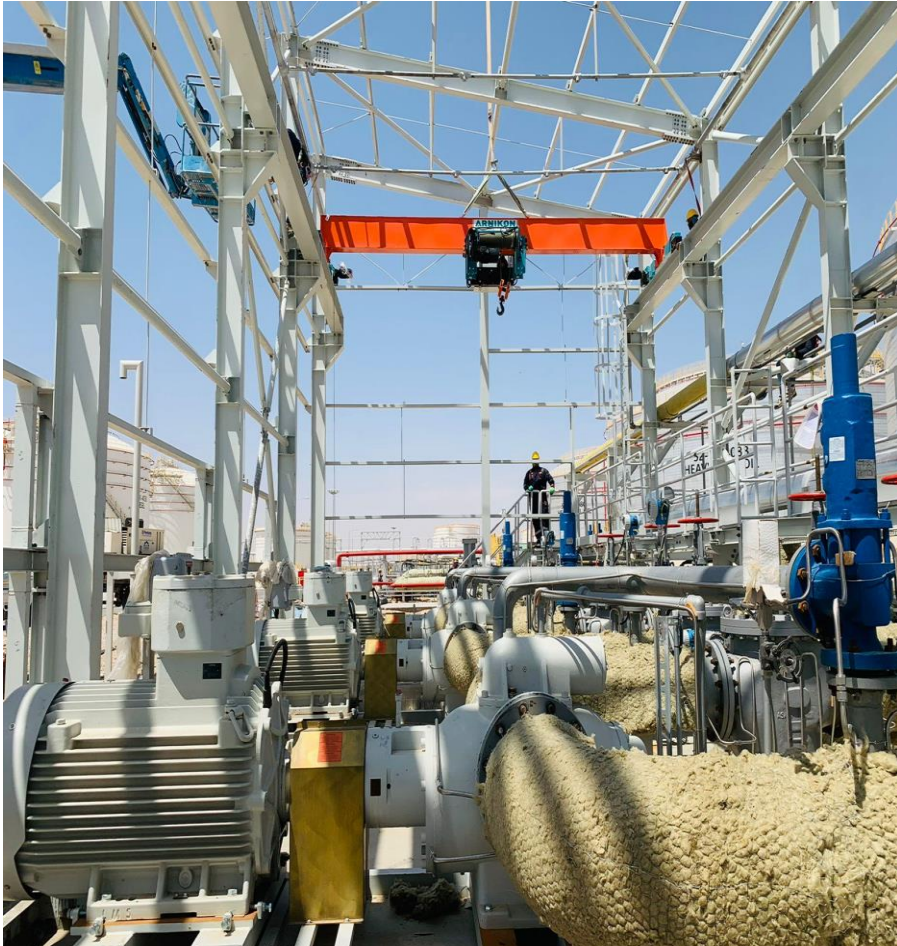
شركة سمو المخيم

للتجارة العامة والخدمات والمقاولات

3-Installation

We did the installation in the Karbala refinery project the pump station with foundations inspection and testing.

Use a proper foundation. The foundation should be rigid, level, and clean of debris. Install the base on the foundation. Install the pump and the driver on the baseplate. Add the proper oil to the proper level in the bearing housings (pump, gear reducers, etc.) Check initial alignment. Ground the base to the foundation. Install piping. Read piping guidelines below. Complete a second alignment check, and readjust piping as needed. With the coupling element removed, complete a rotational check of the driver. Verify correct pump settings. Install ancillary equipment. Install coupling and/or insert. Complete the pre-startup check procedure; fill and vent the pump and system and check the system valve and component "lineup". Recheck alignment to ensure that fluid weight in the piping didn't cause a change in the alignment. Start the unit. Check for proper indicators such as pressures, flows, temperature, vibration, and noise. Recheck alignment. Perform "hot alignment" if fluid is above 200°F.



FOR TRADE &
SERVICES
GENERAL
CONTRACTING
HEAVY AND LIGHT
VEHICLE RENTAL



ADDRESS: IRAQ, KARBALA HEYY FARIS

EMAIL: semo.almukhayam@gmail.com

Website: <http://semo-al-mukhayam-co-ltd.business.site/>

Mobile Contact: +964 782 691-9991

+964 782 854-8866



شركة سمو المخيم للتجارة العامة والخدمات والمقاولات

4-Insulating

We did insulation in two locations in Iraq in KRP tank insulation and piping insulation and in the Baghdad mall colling system.

1-OBJECTIVES

This document provides for insulation of Chilled water piping system in accordance with the Contract Scope of work.

The work will be carried out as per approved planning sequence of work and project schedule with adequate resources to meet target.

The methodology contains the construction procedures, the requirements of materials, equipment and management thereof.

The work shall consist of Insulation for Chilled water piping system along with accessories about the installation procedure with respect to project specifications, approved shop drawing and the manufacturer recommendations.

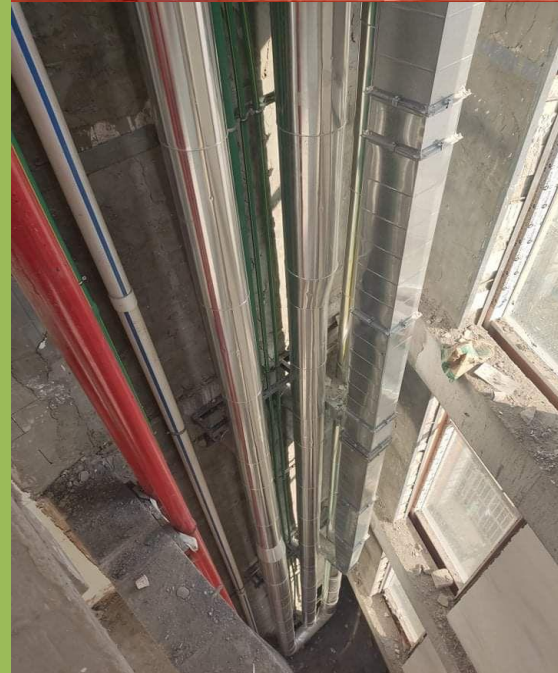
2- GENERAL

- Ensure that the insulation for Chilled water pipes, fittings, valves, and accessories are correct and as per project specification and approved material submittal before commencing the installation works.
- Prior to commencing any works, a risk assessment must be conducted, considering all possible risks and the appropriate precautions put in place, i.e., Fire Extinguishers, Fire Blankets, Safety Harnesses, etc. Refer to the risk assessment/risk management section of this.
- Ensure that shop drawing used on site are approved and latest prior to commencing works on site.

1-PRE WORKS

- Installation procedure shall be as per manufacturer's recommendations.
- All workers shall attend safety induction training on the safe installation methods by the safety department.
- Ensure that chilled water insulation materials received are inspected; found acceptable as per approved materials submittal.
- Ensure that all related materials are of approved make and are available before carrying out any work.
- Prior to commencement of work, inspect areas and access to confirm that the site is ready for commencing the work.
- Material shall be stored appropriately and stacked on wooden blocks and placed on level ground in the lay-down area.

FOR TRADE & SERVICES GENERAL CONTRACTING HEAVY AND LIGHT VEHICLE RENTAL



EMAIL: semo.almukhayam@gmail.com

Website: <http://semo-al-mukhayam-co-ltd.business.site/>

Mobile Contact: +964 782 691-9991

+964 782 854-8866



- g) Material shall be stored appropriately to prevent damage. Material shall not place directly on the ground.
- h) Manufacturer's instructions with regard to storage requirements shall form the basis for material storage and preservation.
- l) Chilled water insulation shall be protected from direct sunlight and foreign debris and stored as per Manufacturer's recommendation.
- j) All relevant documentation (drawings) and materials applicable to particular section of works will be checked by site engineer prior to commencement of work and ensure that shop drawings are as of latest revision approved.
- k) MEP site engineer/ site supervisor will give necessary instructions to tradesmen (Pipe Insulator) and provide necessary construction shop drawings of latest revision.
- l) MEP site supervisor/ foremen will also check that proper insulation tools like cutter/Knife and other equipment are available to carry out the work and are in compliance with manufacturer's recommendations and safety policy.
- m) MEP site supervisor and safety officer will explain to the tradesmen regarding safety precautions to be observed.

Insulation of Chilled water Piping

1. WORKS

6.1 Insulation for chilled water piping system

6.2 Chilled water insulation shall be as per approved Material Submittal, Shop drawings, Project specifications

6.3 All works shall be undertaken in a neat and workman ship manner to ensure the quality of insulation installation.

6.4 Ensure that the insulation size, thickness and other aspects are as per approved material submittals.

6.5 Insulation material will be installed over clean, dry pipe at ground level without covering joints.

6.6 Insulation should be protected from moisture and weather before applications as per manufacturer's recommendations.

6.7 All Insulation section shall be trimmed and tight to avoid gaps or open joints. The insulation application shall be fitted, and proper tightness should be ensured.

6.8 The joints will be insulated after the installation and pressure testing of pipes. All joints should be insulated properly to avoid condensation and follow manufacturer's recommendations for joining.

FOR TRADE & SERVICES GENERAL CONTRACTING HEAVY AND LIGHT VEHICLE RENTAL



ADDRESS: IRAQ, KARBALA HEYY FARIS

EMAIL: semo.almukhayam@gmail.com

Website: <http://semo-al-mukhayam-co-ltd.business.site/>

Mobile Contact: +964 782 691-9991

+964 782 854-8866



FOR TRADE & SERVICES GENERAL CONTRACTING HEAVY AND LIGHT VEHICLE RENTAL

6.9 The tapes/Glue around the ends/joints of pipe shall be as per manufacturer's recommendations.

6.10 Insulation for valves/strainers & other accessories shall be carried out with more precaution, ensure that the surface is free from dust, water or grease particles.

6.11 Insulation shall be measured and cut as required.

6.12 Identifications/Labels for Chilled water pipe works as follows:

a. Identifications Labels for Chilled water pipe works services should be as per Approved Material submittal/Shop Drawings, Project Specifications and Manufacturers recommendations.

b. Identifications labels shall with stand climatic conditions. The Size, Font and Colors should be as per Approved Material Submittal, Project Specifications and Manufacturers recommendations.

c. Chilled water (Supply/Return) should have their own identifications with flow direction marked on the label.

d. The insulated surface where the label is going to be placed should be cleaned to ensure it is free from dust.

e. The identification label is of self-adhesive type, and it should be installed on the cleaned surface indicating the correct direction of flow.

1.RESPONSIBILITY

All personnel engaged in the Insulation of Chilled water piping System activity shall be of adequate experience in their respective discipline work for Insulation of Chilled water Piping

a) Construction Manager is responsible for the overall works.

b) Site Engineer, Surveyor and Foreman is responsible for the installation activities in accordance with the scope of work, approved drawings, related specification and HSE requirements implementation.

c) QA/QC Engineer shall ensure that all works are carried out strictly in accordance with approved , and Inspection and Test plan.

d) Safety Engineer, Safety Officer, Safety Assistant shall ensure that works are carried out in accordance to approved , risk assessment and control measures.

1.ENGINEERING

a) Ensure that the Shop Drawings issued to site are approved and latest.

b) Shop drawings shall follow the IFC drawings, Project Specification requirements and Local Authorities Codes and regulations.



ADDRESS: IRAQ, KARBALA HEYY FARIS

EMAIL: semo.almukhayam@gmail.com

Website: <http://semo-al-mukhayam-co-ltd.business.site/>

Mobile Contact: +964 782 691-9991

+964 782 854-8866



FOR TRADE & SERVICES GENERAL CONTRACTING HEAVY AND LIGHT VEHICLE RENTAL

1. MATERIALS

a) The following material shall be used for chilled water pipe insulation:

I. Insulation sheet or tube

II. Tape/Glue for joining.

b) Material will be delivered at site in undamaged condition, in Manufacturer's packaging, with identifying labels intact and legible.

c) All related documents i.e. delivery notes, country of origin, bill of landing and test certificates shall be available along with materials.

d) Materials will be off loaded according to manufacturer's recommendations.

e) Chilled water insulation will be offloaded in our lay down area prior to transport to site.

f) Delivery of Chilled water insulation will be checked / Inspected by MEP QC engineer to ensure all items on the delivery note are correct prior to signing. Any shortage or damaged items should be recorded on the delivery note and damage Materials will store separate with identification tag or shall be removed from site.

g) Upon delivery of materials at contractor's site stores, inspection will be offered for consultant approval.

work for Insulation of Chilled water Piping

1. PLANT AND EQUIPMENT

a) Measuring Tape.

b) Step Ladders, Scaffolding.

c) Pipe insulator standard toolbox

d) Screwdriver

e) Knife/Cutter

f) Rough Cotton Clothes

g) Plain plate for pressing insulation.

2. HEALTH, SAFETY & WELFARE

a) All safety rules & regulation for the project shall be always adhered to.

Third

Party certified equipment's and competent personnel to be deployed.

Required

Permit to be secured. Risk assessment and risk control measures are to be in place.



ADDRESS: IRAQ, KARBALA HEYY FARIS

EMAIL: semo.almukhayam@gmail.com

Website: <http://semo-al-mukhayam-co-ltd.business.site/>

Mobile Contact: +964 782 691-9991

+964 782 854-8866



b) All site personnel shall be properly equipped with protective clothing and tools

appropriate for their duties and shall ensure that work area facilities are safe prior to

The commencement of work activities.

c) All individual tasks mentioned in this document will be subject to individual,

risk assessments and toolbox talks by safety officer in site before work commence

on a daily basis.

d) No refueling whilst equipment is running. To be done only at designated area on the field.

e) Provide banks man or spotter during equipment maneuvering and during hauling of excavated materials.

f) All lifting tackle will be inspected before use.

g) All personnel will have to undergo the applicable safety training and wear PPE i.e.,

Safety Helmet, Steel-Toed safety Boots or Shoes, Safety Glasses and coveralls as

The minimum requirement and gloves and High Vests where necessary.

h) For dusty working environment dust masks shall be used.

1. ENVIRONMENT

Works will proceed under controlled environment. Control measures identified in the risk assessment to be in place. Significant aspect highlighted to dust and contamination during dewatering. Dust suppression by means of water sprinkling and dewatering to be followed.

1. COMMUNICATION AND TRAINING

After approval a pre-construction meeting to be held among the supervisory staff involved. Trainings mentioned in the risk assessment to be followed.

2. QUALITY CONTROL

Significant stages of work shall be monitored and ensured to be enforced by the concerned as per the Inspection and Test Plan attached to this document. Inspection request to be submitted to the Engineer a day prior to inspection schedule.

FOR TRADE & SERVICES GENERAL CONTRACTING HEAVY AND LIGHT VEHICLE RENTAL



ADDRESS: IRAQ, KARBALA HEYY FARIS

EMAIL: semo.almukhayam@gmail.com

Website: <http://semo-al-mukhayam-co-ltd.business.site/>

Mobile Contact: +964 782 691-9991

+964 782 854-8866



5- Civil work

we did civil work in the Karbala water treatment project we made excavation and back filling and foundations and form work, rebar work and casting and Rebar work we chipped and drilled for bolts fixing.

PURPOSE

To specify the requirements of civil construction including excavation, filling, and allied activities complying with the contract document, specification, and scope of work and

approved drawings/documents. It also includes earthworks associated with trenches for

SCOPE.pipelines or service ducts

This description applies to all the civil works - Excavation including ground

preparation, setting out, backfilling, soil compaction, concreting,

,waterproofing, masonry

plastering, joinery - related to the construction of building as per ,project requirements

.referring with approved Civil and MEP drawing

ROLES & RESPONSIBILITY

The primary responsibility of carrying out all the activities mentioned in this procedure rests.

.with the site- in-charge unless mentioned otherwise

:Project Leader

Overall execution and administration of the project as per

,contract requirements

specifications and for preparation and updating of PQP. Directly control the Site

.Engineers and Supervisors

:Site Engineer

Assess manpower, equipment or other resources required to ensure timely completion of the

project. Monitor availability of all materials as per schedule. Inform the Project Leader for

any non-availability of materials to take proper action. Carry out receiving inspection in

coordination with the QA/QC Engineer. Ensure that the drawings and documents are up to

date and the latest drawing are available and is being utilized in the -project site works. Filled

**FOR TRADE &
SERVICES
GENERAL
CONTRACTING
HEAVY AND LIGHT
VEHICLE RENTAL**



ADDRESS: IRAQ, KARBALA HEYY FARIS

EMAIL: semo.almukhayam@gmail.com

Website: <http://semo-al-mukhayam-co-ltd.business.site/>

Mobile Contact: +964 782 691-9991

+964 782 854-8866



FOR TRADE & SERVICES GENERAL CONTRACTING HEAVY AND LIGHT VEHICLE RENTAL

up the check-sheet and submit the necessary IR to the QA/QC function
.when the work is ready for inspection

QA/QC Engineer: Responsible for the monitoring and implementing of quality related.

matters and ensure the works are being executed with the approved Project Quality Plan and

requirements of the Contract Documents, sections 1 part 8 of QCS 2010, approved

.statement and ITPs

Safety Officer: Responsible for monitoring and implementation of safety related matters

such as work permits, First Aid, PPE, approval of diversions, follow the safety and traffic.

regulations by all the workmen during the construction, according to the approved project

HSE plan. First Aid boxes are readily available with HSE officer and other two numbers at

.site personnel's vehicles for site requirements

:Supervisor/Foreman

Plan and obtain required manpower and resources in coordination with .the Site Engineer

Carry out all activities as per the planned schedule to achieve target dates. Coordinate with

respective disciplines of work and liaise with the site engineer for .day-to-day activities

Inform Discipline Engineer regarding site inspections when it is ready. Ensure pre task.

.briefing is to be conducted prior to start of work at each session

:Charge hand

Works shall be executed as per direction of Supervisors/Foremen for all activities as per the

planned schedule to achieve target. Coordinate with respective disciplines of work and liaise with the Supervisors/Foremen for day-to-day activities. Ensure

.pre task briefing is conducted prior to start of work at each session



ADDRESS: IRAQ, KARBALA HEYY FARIS

EMAIL: semo.almukhayam@gmail.com

Website: <http://semo-al-mukhayam-co-ltd.business.site/>

Mobile Contact: +964 782 691-9991

+964 782 854-8866



INSPECTION & TESTING

Site inspection/approval shall be in accordance with the approved Inspection and Test Plan for all activities in addition to the Quality Control Procedure and Project Quality Plan for the .Project

,All the required site test shall be conducted as per the Section-21

WORK PERMITS

All necessary work permits shall be obtained prior to the commencement of any activity at site and shall remain valid throughout the entire duration of the .operation

Safety Barriers and Site sign boards will be installed prior to the work .commencement

HEALTH, SAFETY AND ENVIRONMENTAL PROCEDURES

Requirements of Health, Safety and Environmental for the project shall be in accordance.

with approved Project HSE Plan, the contract document and Part-15 & 19, .section

Before commencing of any work, the required and applicable work permits shall be checked.

and ensure all requirements of WP are compiled and they are valid until completion of the

.activity and as per approved HSE plan

All personnel accessing their site will wear the mandatory PPE. All workmen and staff shall

wear the mandatory and job specific Personnel Protective Equipment's. Pre-task briefing

shall be conducted on every day before starting the work. Experienced and HSE inducted.

workmen shall be deployed for the work. All personnel shall be cautioned while working.

near any live lines such as power cable, water lines, drainage lines, telecom etc.

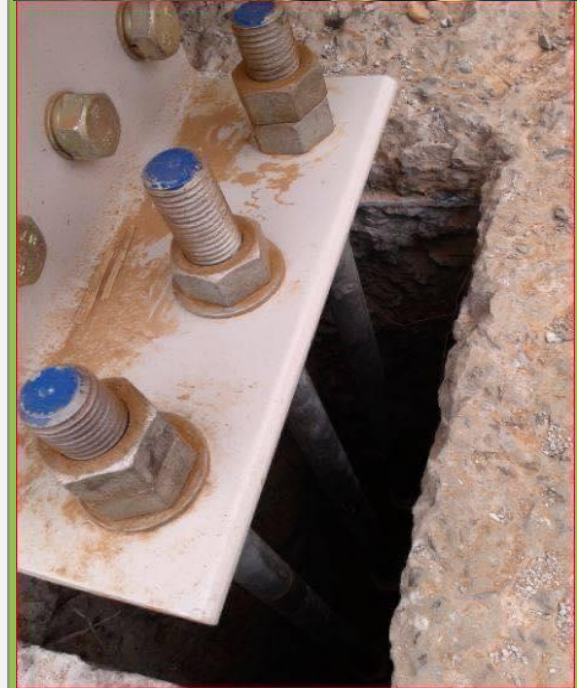
Prior to commencement of work all workers shall be given pre-task briefing. Hazards

identified for the activity shall be disseminated during pre-task briefing, especially for

underground services, slip & trip, improper access, excavation tools handling, no access or

aggress, vehicle collision, heat exhaustion, which shall be identified and documented

FOR TRADE & SERVICES GENERAL CONTRACTING HEAVY AND LIGHT VEHICLE RENTAL



ADDRESS: IRAQ, KARBALA HEYY FARIS

EMAIL: semo.almukhayam@gmail.com

Website: <http://semo-al-mukhayam-co-ltd.business.site/>

Mobile Contact: +964 782 691-9991

+964 782 854-8866



separately by permit to work system as per approved HSE plan
First aid stations complete with all first aid equipment and trained first aiders shall be maintained for the initial car
Safety and security procedures shall be implemented as a minimal, barricades, railing and other safeguards shall, warning signs and lights be provided as required by the nature and location of the work
The environmental risk assessment and environmental management plans have been reviewed for the work activities
.proposed in the found to be suitable and adequate
Electrical waste will be segregated at source and transported to dedicated segregated waste.storage area and not be allowed to accumulate on site in undesignated areas.

Concrete waste will be removed from work areas at regular intervals to .designated area

Construction waste will be disposed as per local laws & client guidelines .by licensed carrier.to a licensed facility

QUALITY ASSURANCE & CONTROL

The Quality Assurance and Control for the above-mentioned activities shall be exercised and recorded in accordance with the contract documents, applicable section 1, and part 8 of QCS.

for Quality Assurance and the approved Project Quality Plan for the .project

The quality assurance shall be ensured for workmanship, equipment, and materials conformance to the applicable standards and requirements at every stage .of the construction

This shall be monitored by quality control personnel or designated .substitute on the site.during the production / operation

Quality assurance requirements shall also be imposed upon sub-contractors, suppliers manufacturers and any other parties associated and involved in the project. Non-conforming materials shall be notified in writing to correct or remove the defective materials from the work site .

All inspections and tests shall be conducted in accordance with written test procedures as

detailed in the Project Quality Plan and Inspection and Test Plan approved by the GEIC.

.Engineer

Applicable documents with latest version such as Inspection & Test Plan, shall be readily available and used by inspection and test personnel at the time of inspection.

as referring documents

FOR TRADE & SERVICES GENERAL CONTRACTING HEAVY AND LIGHT VEHICLE RENTAL



ADDRESS: IRAQ, KARBALA HEYY FARIS

EMAIL: semo.almukhayam@gmail.com

Website: <http://semo-al-mukhayam-co-ltd.business.site/>

Mobile Contact: +964 782 691-9991

+964 782 854-8866



شركة سمو المخيم

للتجارة العامة والخدمات والمقاولات

MATERIALS

Approval shall be obtained for all the materials with reference to Client's preferred vendor.

.list, prior to commencement of activities

Material Inspection Request (MIR) will be submitted to client upon material arrival to

.warehouse

All materials must be stored properly as per the manufacturer's

.recommendations and QCS

The Material shelf life will be monitored as per Manufacturer's data sheets.

MANPOWER

Site Engineer

Supervisor HSE

Inspector

QA/QC Inspector

Carpenters

Steel Fixers

Masons Helpers

Painters Operators

Drivers & Technicians

EQUIPMENT & TOOLS

.The following equipment and tools shall be used for the various activities

Excavators

Shovels

JCB / Self-Loaders

Bobcat

Tipper Trucks / Trailers Water

Tankers Rollers/Compactors

Transit Mixers Concrete

pump Vibrators

Dewatering pump

Mobile crane Angle

Grinders Cutters

Drilling Machines

Wheelbarrows Bagger

mixer Hand tools

WORK PROCEDURE FOR CONSTRUCTION OF OTHER CIVIL JOBS 14.1

Initial Survey & Site Checking 14.2

Upon receipt of Job Instruction / Drawing form Consultant Engineer, an initial site visit to

be made along with the consultant representative to confirm the site and demarcations

FOR TRADE & SERVICES GENERAL CONTRACTING HEAVY AND LIGHT VEHICLE RENTAL



EMAIL: semo.almukhayam@gmail.com

Website: <http://semo-al-mukhayam-co-ltd.business.site/>

Mobile Contact: +964 782 691-9991

+964 782 854-8866



Proper Safety Fencing and site sign boards will be installed prior to the

.Back filling and Compaction 14.3 construction.

Back filling material shall be as per QCS 2002-Section-12-Part 3-Clauses .3.2.2, 3.2.3

Back filling shall be done in layers of not more than 250mm loose thickness as per QCS.

Section-12-Part 3.5 and each layer thoroughly watered and -2002 rammed to ensure

Minimum Dry Density of 95%. Testing of compaction will be performed as directed by the

.engineer

Earth work under substructure shall be provided with anti-termite treatment for the approval.

.of the Engineer

Construction of RCC Foundation, Columns, Grade Beam, Roof Beam 14.4 and Slab

The bottom of excavation shall be compacted and offered for inspection and testing by the

consultant Engineer. Over excavation should be provided with SRC 20 concrete to the

.required Level

On approval of above activity, 75mm thick blinding concrete shall be laid to the required.

.levels and size, supplied from approved ready-mix plant

After completing the excavation works, activities for Foundation to be ,carried out first

followed with columns up to slab height completed later plinth and inside Reinforcing steel.room work to be.starte

Engineer's approval will be obtained for reinforcement before using in .permanent works

All reinforcement will be stored on racks inside the stores. Different types & sizes will be.

kept separately. All reinforcement will be kept protecting from damage, free from dirt, loose.

.mill scale, rust scale paint, oil, or other foreign substances

As per the specifications & drawing,the bar bending schedules & bar lists, cutting.

schedules for each individual structure will be prepared by the contractor .and will obtain.the approval from the engineer

FOR TRADE & SERVICES GENERAL CONTRACTING HEAVY AND LIGHT VEHICLE RENTAL



ADDRESS: IRAQ, KARBALA HEYY FARIS
EMAIL: semo.almukhayam@gmail.com
Website: <http://semo-al-mukhayam-co-ltd.business.site/>

Mobile Contact: +964 782 691-9991
+964 782 854-8866



FOR TRADE & SERVICES GENERAL CONTRACTING HEAVY AND LIGHT VEHICLE RENTAL

Manual cutter or mechanical cutter will be used for cutting of bars &
.bending machine will be used for bending of bars
All reinforcement will be cleaned by a wire brush or any other means
.before placing
All reinforcement placed should comply with the drawings. Lap length
will be taken in to account according to the project specification when
.binding reinforcement bars

Form work

.All formworks will be made by using plywood sheets, timber or by metal
Supports and scaffolding will be G I pipes, Arco props, sawn timber, or
.round timber

.All surfaces of formwork will be finished smooth and mortar tight
The dimensions & position of formwork will be carefully checked after
.erection

Oil or grease will be used to avoid adhesion of mortar and to achieve a
Before placing concrete all dirt, wood chips, .smooth surface
hardened concrete, or mortar and all other
.foreign matter will be removed from the forms

Before fixing of form work, detailed drawing will be submitted to the
.engineer for approval

Well qualified foreman's will be appointed for fixing on formworks &
.reinforcement work

Placing of concrete

The method for placing of concrete will be worked out to prevent
segregation of the material.

.Engineer's approval will be taken before concreting begins &
Before placing concrete all formworks therein will be cleaned of all
extraneous material and

.dust and made free of any standing water

In continuing concrete, fresh concrete will be placed before the already
placed concrete is.

Concrete of specified grade will be placed & .less than 20 minutes
compacted in horizontal layers normally not.

Concrete will not be dropped from a height .exceeding 300mm in depth
.greater than 1.5m to prevent segregation

.Concrete will be free of all rock pockets, honeycombs & voids

Complete Records showing the details of placing concrete in each part of
the work will be.

.maintained and will be available for inspection at the site

Compacting / vibrating of concrete



ADDRESS: IRAQ, KARBALA HEYY FARIS

EMAIL: semo.almukhayam@gmail.com

Website: <http://semo-al-mukhayam-co-ltd.business.site/>

Mobile Contact: +964 782 691-9991

+964 782 854-8866



FOR TRADE & SERVICES GENERAL CONTRACTING HEAVY AND LIGHT VEHICLE RENTAL

Mechanical vibrators will be used for compaction. For this standby units will be available in the site during the period of compacting. All operators handling vibrators will be trained in their operation properly

Curing

Continuous curing will be carried out in a moist atmosphere for a minimum period of 10 days.

and for a further period required by engineer

Concrete area will be kept covered with hessian clothes or Polyethylene sheets which will be kept moist throughout the curing period

Construction joints

The surface of the hardened concrete will be cleaned and made free from laitance and will also have an exposed aggregate finish

The fresh concrete will be placed and compacted so that it bonds properly to the prepared surface of the previously laid concrete

Laitance on the surface will be completely removed from the concrete to achieve a good bond with fresh concrete

Between one and two hours after placing concrete, water will be sprayed gently and laitance will be removed with two brushes, one with soft and other with hard bristles

After finishing this operation, just the tips of the aggregate should be showing

If the laitance has hardened, a wire brush will be used to remove it. Clean water will be rinsed to get rid of the dust

Water stops in construction joints will be installed & approval for this will be taken from the engineer

Checking water content & slump test

Frequent slump test will be carried out in accordance with BS 1881 on samples of concrete.

taken immediately before placing to determine the consistency of concrete

All the test reports will be maintained in the site office & will be available for the inspection whenever required

Testing of concrete

All necessary arrangements for the sampling & testing of fresh & hardened concrete in accordance with the BS 1881 will be taken

Crushing test will be carried out on concrete cubes formed in 150mm molds. One set of cubes (2 cubes crushed in 7 days & other in 28 days)

will be done to maintain the quality of work



ADDRESS: IRAQ, KARBALA HEYY FARIS

EMAIL: semo.almukhayam@gmail.com

Website: <http://semo-al-mukhayam-co-ltd.business.site/>

Mobile Contact: +964 782 691-9991

+964 782 854-8866



شركة سمو المخيم

للتجارة العامة والخدمات والمقاولات

Care will be taken to ensure that the test cubes are stored under uniform

.conditions.in the site & during any transit between site & laboratory

Waterproofing Ensure that all preceding activities or activities completed

which cannot be accessed after waterproofing works are inspected,

released, and approved Obtain MEP clearance and clearance from

other specialist trades which may not be accessible after

.waterproofing, prior to commencing waterproofing works

Rectify non-conforming conditions prior to commencing the

waterproofing works Surface Preparation

All surfaces to receive waterproofing to be clean, dry, and free from dirt,

dust, oil, and grease Wall Protrusions that likely to punch through the

waterproofing films to be removed either by using a chipping hammer or

grinder Prepare and level the concrete surfaces for waterproofing

.either by chipping, hacking or scraping the surface

Repair the excessive pinholes, and similar imperfections (if any) to

Barricade the working area as to be a non-.eliminate uneven surface

Raise an inspection request for surface preparation .trafficking passage

.(RFI) prior to the waterproofing work.commences

Installation of Accessories and marking of Waterproofing Levels

Immediately after the inspection use Viscose Elastic type adhesive tape at

.week joints and sharp edges

Marking of waterproofing application levels can be commenced at this

.stage

Levels should be true, square and in plumb at locations as indicated on

the approved shop.

.drawings/IFC drawings

.Use suitable fasteners when required

Install waterproof level pads also to serve as guides in controlling the final

thickness of the

waterproof and the finished plane of the waterproofed surface, relative

.to the accessories installed

Application and Protection Ensure all other trades in the said location are

put on hold during the waterproof.application so to protect and avoid any

.damage to the waterproofing layers

Apply first coat using a manual brush application uniformly at a workable

Floor application should continue to the vertical wall face up .consistency

.to a minimum of 150mm as per the project specifications

Ensure all surfaces to receive waterproofing fluid Application firmly

.to achieve goodadhesion and to be in one continuous operation

Subsequent coats of waterproof may be commenced immediately after

setting of the previous coat approximately 3 to 5 hours and as per the

manufacture's recommendations

FOR TRADE & SERVICES GENERAL CONTRACTING HEAVY AND LIGHT VEHICLE RENTAL



ADDRESS: IRAQ, KARBALA HEYY FARIS

EMAIL: semo.almukhayam@gmail.com

Website: <http://semo-al-mukhayam-co-ltd.business.site/>

Mobile Contact: +964 782 691-9991

+964 782 854-8866



شركة سمو المخيم

للتجارة العامة والخدمات والمقاولات

Second coat should be applied at a right angle to the first coat. Finish coats to be true to the plane with a homogenous finish.

Approved Bitumen Impregnated Protection Boards should be provided for protection with sufficient lapping as per the manufacture's

Footings shall be protected by 4mm thick .recommendation

waterproofing membrane sheets laid on concrete.surfaces primed with

Laid sheets shall be protected from Damage by using .bismuthine primer bituminous protection boards or 40mm.SRC screed concrete as horizontal

Vertical faces shall be protected against damage from .protection

.backfilling by using Servipak6 or equivalent protection boards

.All application shall be according to manufactures instructions only

Approval shall be obtained from the Engineer prior to commence the

.backfilling works

Masonry-

Block works shall be done as per approved drawings and shall comply with QCS All block works executed below ground level built with S.R C

cement and shall built in S.R.C mortar. Normal weight Hollow Blocks

having a minimum compressive strength of 7.0.N/mm² shall be use

Samples of each type of masonry unit and accessory shall be

submitted to consultant for approval Marking up of exact location of

block walls and openings as per approved shop drawings shall be done

.before commencing the work

Block marked areas shall be cleaned and wet before to start with the

.Mortar mix shall comply with project specifications and QCS.activity

One course of block only will be executed for testing and approval by the

.consultant

Walls shall be always kept level and carried up in a uniform manner. No part being raised.

.more than 1500mm above any adjacent unbuilt course

.Angles & Reveals shall be kept true, square, and plumb all the time

Horizontal joints shall be leveled all the time and vertical joints in

.alternate courses shall be.plumb and line

Opening frames shall be set and maintained square, plumb, true, and

.furnished with anchors

Install reinforced concrete block lintels or GI steel lintels over openings as per approved.

.shop drawing or cast in places as per specification

Top of block partitions and sides will be supported by using galvanized steel anchors/ties as

per approved shop drawings and material submittals

FOR TRADE & SERVICES GENERAL CONTRACTING HEAVY AND LIGHT VEHICLE RENTAL



ADDRESS: IRAQ, KARBALA HEYY FARIS

EMAIL: semo.almukhayam@gmail.com

Website: <http://semo-al-mukhayam-co-ltd.business.site/>

Mobile Contact: +964 782 691-9991

+964 782 854-8866



FOR TRADE & SERVICES GENERAL CONTRACTING HEAVY AND LIGHT VEHICLE RENTAL

Concrete block walls and partitions shall be reinforced horizontally each second course, last top course, second and third course above lintels and After completing of each .below sills of opening with the required overlap section of the walls, cleaning shall be done to the down surfaces. and .curing will start immediately

Final inspection shall be carried out for the entire work for approval of .the engineer

Plastering-

Prepare surfaces for the smooth or non-absorbent solid surfaces that do not have the suction capability to receive a solid plaster bases by .chipping, wire brushing or sand blasting, as appropriate

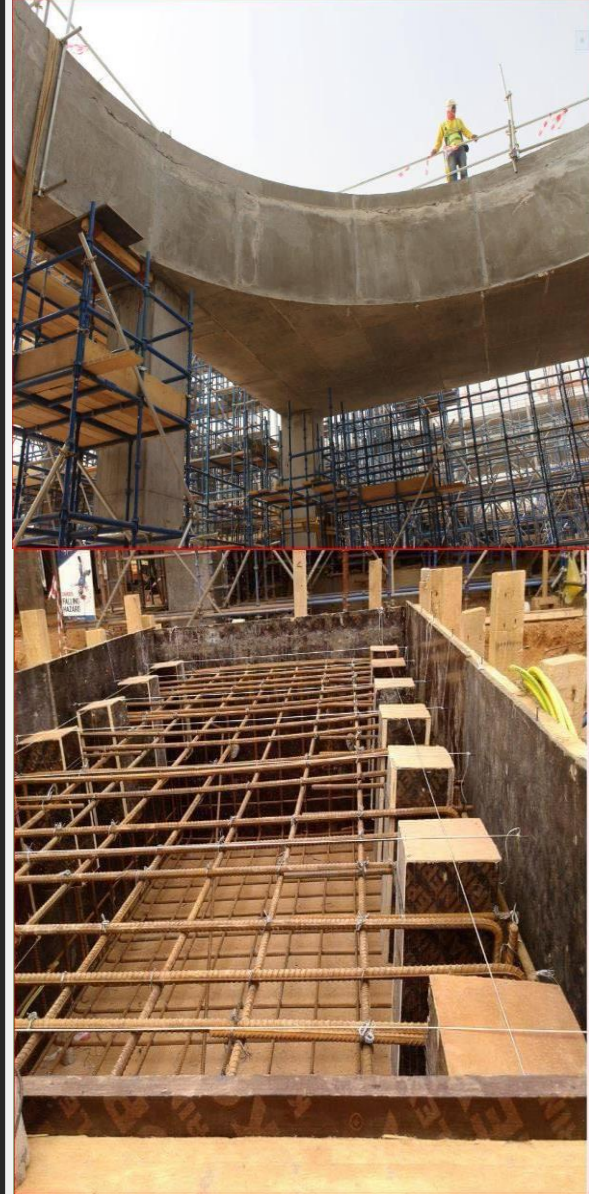
Install beads at their locations plumbed and squared. And it will be best achieved by using .galvanized nails or small quantities of mortar and as Install the corner, control joints .per manufacturer's recommendations and movement beads at locations indicated in the drawings.and manufacturer's instructions

Prepare plaster in a mechanical mixer, using sufficient water to produce a workable consistency and uniform color shall be used to mix a batch containing one bag of Portland.cement, 5 parts aggregate, aerating plasticizer as per manufacturer's recommendation for use over Concrete Unit Masonry

Spray water on the wall surface and throw the spatter dash mix (scratch coat) by using a spatter dash manual machine in a way to form a rough layer 3-5mm thick without any .attempt to level or smooth it. The rough surface shall be kept damp with fine water spray or by covering .with polyethylene sheet until it sets down

Apply plaster/render coat after the scratch coat had hardened. Initially, a thin coat is troweled on the scratch coat to ensure a thorough bonding at The remainder of the render coat is then built up using .the surface .wooden float to receive textured finish.until the required thickness met Apply final thin coat plastering using steel trowel on the interior surface .to match with the Architect's sample as specified

The coating thickness shall not deviate more than +/- (6.4mm in 3m) from the trueness of the plastered finish, as measured with straight edge placed on the surface The newly applied external coatings shall be cured and protected against frost, heat, and rain.for the first 48 hours using canvass, cloth, or sheet, hung clear at the plaster surface. Moist curing by applying a fine fog spray of water, generally twice daily in the morning and evening



ADDRESS: IRAQ, KARBALA HEYY FARIS

EMAIL: semo.almukhayam@gmail.com

Website: <http://semo-al-mukhayam-co-ltd.business.site/>

Mobile Contact: +964 782 691-9991

+964 782 854-8866



HEALTH & SAFETY-

Refer to the site safety policy for general safety controls. One of the main aspects of this procedure is Safety and Health Control. This is to control occurrence of injuries as well as damage to equipment and properties during the entire construction period. Toolbox meetings shall be conducted on every day before the start of the work. Experienced workmen only shall be deployed for the work. All personnel shall be cautioned while working near the pipes/ cables. Hazard identification shall be done during toolbox meetings especially for heat. To ensure a safe working environment during the entire construction period, the following.

.safety measures will be implemented

:Machinery and Equipment

Prior to use any machinery/equipment at site, it shall be inspected and certified by qualified person

Periodic Preventive Maintenance shall be made on all equipment and machineries

All operators and driver are to be equipped with valid driver's/operator's license or permit from concerned government agency

Only authorized drivers or operators will be allowed to operate machineries or equipment. Only authorized signalman shall be assigned together with the operator or driver

All lifting equipment as well as its accessories such as sling wire, nylon sling, shackles, chain blocks, crane hook and latch shall be inspected

.periodically

:Personal Protective Equipment

PPE shall be issued to all workers such as safety shoes, hard hat, working gloves, ear plugs, safety.

goggles and safety belt and or safety harness for workers who will be assigned in elevated places

Wearing of the basic PPE shall be enforced fully.

FOR TRADE & SERVICES GENERAL CONTRACTING HEAVY AND LIGHT VEHICLE RENTAL



ADDRESS: IRAQ, KARBALA HEYY FARIS

EMAIL: semo.almukhayam@gmail.com

Website: <http://semo-al-mukhayam-co-ltd.business.site/>

Mobile Contact: +964 782 691-9991

+964 782 854-8866



شركة سمو المخيم للتجارة العامة والخدمات والمقاولات

6-Piping

We did pipe work in the Karbala depot project according to the isometric design from the client.

1.0 PURPOSE

1.1. This work procedure and shall provide minimum guidelines to carry out the Aboveground Piping Installation Works activities for piping or mechanical engineers, procedures in accordance with contract scope of work and project specification .

3.0 APPLICABLE DOCUMENTS

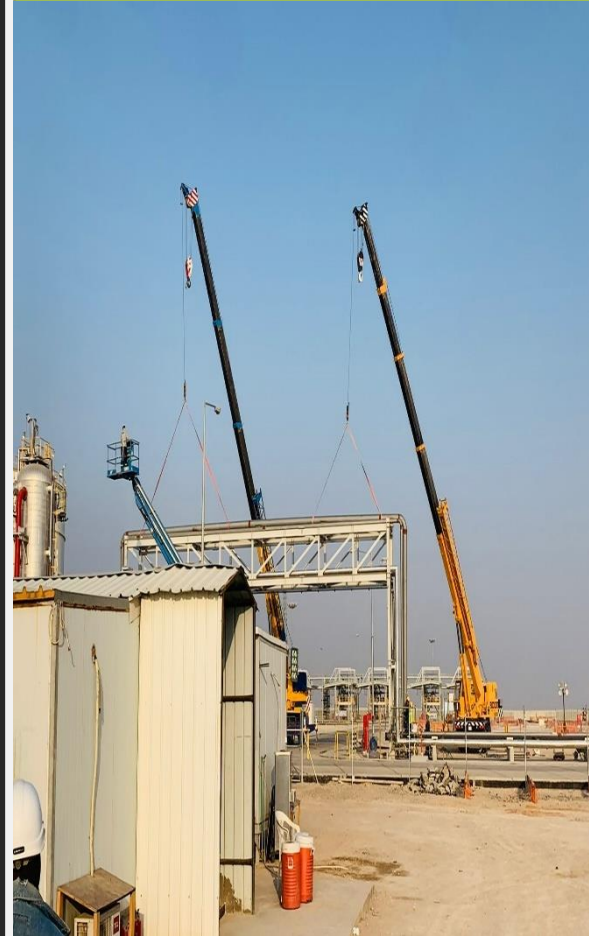
- Piping Material Specification
- Identification of Piping Materials
- General Specification for Insulation
- Construction Specification for Installation of Static Equipment
- Construction Specification for Installation of Rotary Equipment
- Construction Specification for Piping Work at Prefabrication Shop
- Specification for Piping Construction Work in Field
- Piping Pressure Test Procedure
- Line Check Scope of work
- Piping Internal Cleaning Procedure
- Bolt Tensioning Procedure
- Piping Spool Drawing Preparation and Weld Joint Registration Procedure
- ISO/Spool Drawing and Data Handling Procedure
- Supplementary Specification for External Coating
- Supplementary Specification for Safety Identification and Safety Colors
- Supplementary to SAES-A-206 Positive Material Identification
- Material and Equipment Protection Program at Work Site
- Detailed Material Control Procedure for Piping Material at Field
- Material Traceability at Site (Construction Phase)
- 3.5. Standard Drawing / Latest Revision Documents
- 3.5.1. Piping and Instrument Drawing (P&ID)
- 3.5.2. Piping General Arrangement Drawing
- 3.5.3. Pipe Support Detail Drawing
- 3.5.4. Isometric Drawing (Full Isometric)
- 3.5.5. Spool Drawing (Spooled Generated)

4.0 RESPONSIBILITY

4.1. Construction Manager shall implement all HSE requirement for the job, study, analyze and schedule all construction activities with his department to include manpower and equipment line up as well as other possible resources required for the successful implementation of the construction work activities. He shall study all aspects of work procedure as per Technical Scope of Work.

4.2. Piping Superintendent shall study and review all necessary documents for the installation works to include, technical scope of work, specification, bill of quantities, planned milestone dates and construction procedure to support to his supervisor. He shall monitor the availability of materials in accordance with construction schedules. He shall directly report to construction Manager.

FOR TRADE & SERVICES GENERAL CONTRACTING HEAVY AND LIGHT VEHICLE RENTAL



ADDRESS: IRAQ, KARBALA HEYY FARIS

EMAIL: semo.almukhayam@gmail.com

Website: <http://semo-al-mukhayam-co-ltd.business.site/>

Mobile Contact: +964 782 691-9991

+964 782 854-8866



شركة سمو المخيم

للتجارة العامة والخدمات والمقاولات

4.3. Piping Supervisor shall be directly reporting to the Piping Superintendent and responsible for the implementation and control of all site activities per Technical Scope of Work and latest approved construction drawings. He shall coordinate with other discipline to visualize possible conflicts in the drawing as well as in the schedules to provide other options in preventing unnecessary delays and obstructions.

4.4. The Welding Supervisor and Foreman are solely responsible to ensure that all welding works are in conformance with applicable codes, standards, specifications, and approved procedures.

4.5. Piping Foreman shall be responsible for the direct work supervision at site and ensure that the work is performed in accordance with Technical Scope of Work and latest approved for construction drawings. He shall monitor the availability of materials in line with his required schedule at site and reports directly to Piping Supervisor.

4.6. QC Inspector shall be responsible for inspection and monitoring of the work and ensure that the work is performed and properly documented in accordance with Project requirements.

4.7. Safety Supervisor shall be responsible for monitoring safety aspects and ensuring that the work is done in accordance with Safety Standard Procedure. He shall discuss with the workers the characteristics of related materials and status of work area giving reminders as an additional point to work safely.

5.0 MANPOWER

5.1. The Piping Superintendent shall control the overall activity of Piping Aboveground Installation Works. The basic manpower under him shall consist of but not limited to the following:

5.1.1. Piping Supervisor

5.1.2. Piping Foreman

5.1.3. Welding Foreman

5.1.4. Pipe fitters

5.1.5. Welders

5.1.6. Crane Operator

5.1.7. Rigger

5.1.8. Helpers

5.2. Safety Engineer/Officer

**FOR TRADE &
SERVICES
GENERAL
CONTRACTING
HEAVY AND LIGHT
VEHICLE RENTAL**



ADDRESS: IRAQ, KARBALA HEYY FARIS

EMAIL: semo.almukhayam@gmail.com

Website: <http://semo-al-mukhayam-co-ltd.business.site/>

Mobile Contact: +964 782 691-9991

+964 782 854-8866



شركة سمو المخيم
للتجارة العامة والخدمات والمقاولات

6.0 TOOLS AND EQUIPMENT

6.1. Tools and equipment needed should be in good condition and must be checked by Piping Supervisor / Safety Officer prior to use in the construction area. These includes but not limited to:

6.1.1. Tools, Jigs, Instruments

6.1.1.1 Ball Hammer

6.1.1.2 Wrenches

6.1.1.3 Magnetic/Spirit Level

6.1.1.4 Fillet Gauges

6.1.1.5 Dial Indicator

6.1.1.6 Pipe Jack Stands

6.1.1.7 Chain Block/Puller

6.1.1.8 Pulley

6.1.1.9 Cable

6.1.1.10 Flange Jack

6.1.1.11 Feeler Gauge

6.1.1.12 Bevel Gauge

6.1.1.13 T-Square

6.1.1.14 Straight Edge

6.1.1.15 Hi-Lo Gauge

6.1.1.16 Internal Flange Alignment Tool

6.1.1.17 Wraparound

6.1.2. Equipment

6.1.2.1 Mobile Crane

6.1.2.2 Forklift

6.1.2.3 Welding Machine

6.1.2.4 Threading Machine

6.1.2.5 Hand Grinder

6.1.2.6 Pencil Grinder

6.1.2.7 Cutting Outfit

6.1.2.8 Boom Truck

6.1.2.9 Generator Set

6.1.2.10 Trailer Truck

6.1.2.11 Pipe Roller

7.0 MATERIAL RECEIVING, STORAGE AND PRESERVATION

7.1. Material Receiving

7.2. Material Handling / Storage

7.2.1. All materials shall be handled with care during installation to prevent damage.

7.2.2. Wide fabric slings shall be used for lifting lined and coated pipe and fittings to prevent damage as per SAES-H-200.

7.2.3. Special attention shall be given to protection of flange(s) faces to prevent any damage, by ensuring that flanges received from warehouse are properly protected. Stainless steel and non-ferrous alloy pipe / fitting shall be stored and handled with special care to avoid any contamination and should be kept away from carbon steel material including carbon steel grinders, blush, and the likes.

FOR TRADE & SERVICES GENERAL CONTRACTING HEAVY AND LIGHT VEHICLE RENTAL



Website: <http://semo-al-mukhayam-co-ltd.business.site/>

Mobile Contact: +964 782 691-9991

+964 782 854-8866



7.2.4. Flange face serration shall be made as per S-000-1360-003 (Flange Facing Finish) or piping engineer to approve at site if flange face damaged.

7.2.5. Pipe shall be placed on any type of dunnage. Pipe shall not be stored directly on the ground.

7.2.6. Stacking of pipe shall be made in accordance with vendor preservation procedure to avoid damage to pipes or coating.

7.2.7. End protectors on pipes, flanges, any fittings, weld bevels, threads, and socket ends shall be firmly attached.

7.2.8. Contamination between carbon steel, stainless steel and non-ferrous alloy shall be avoided.

7.3. Material Preservation

7.3.1. Pipes, valves, and fittings shall be internally and externally cleaned and be checked for any defects and damages. Any damage and defects shall be promptly reported to authorized designated personnel.

7.3.2. Preservation shall be in accordance with manufacturer's recommendation and Specification (S-000-1630-003: Material and Equipment Protection Program at Work Site).

7.3.3. Piping internal cleaning shall be in accordance with specification (S-000-3160-007: Piping Internal Cleaning Procedure)

8.0 GENERAL REQUIREMENTS

8.1. Isometric and Spool Drawing Preparation

8.1.1. Detail Drawing

8.1.1.1 Spool erection drawing, and spool piece drawing shall be prepared. Only in case of any changes in ISO drawing such as Revision ISO and FS (Field Modification), SAACO shall revise in accordance with specification S-000-3160100, Piping Spool Drawing Preparation and Weld Joint Registration Procedure. when revision of spool erection drawing and spool piece drawing by are required.

8.1.1.2 The latest revision of approved IFC drawings shall be used.

8.1.2. Fabricated Piping Piece Maximum Dimension

8.1.2.1 The maximum dimension of fabricated piping pieces shall be limited to as follows:

3.5m (H) x 14.0 m (L) x 2.4 m (W)

Note: Above dimension limitation shall be also applicable to piping spool with internal lining.

8.2. Qualification of Welder/Welding Operator

8.2.1. Qualification of welders/welding operators shall follow the requirements and instructions in SAEP-324 regarding certifications and qualification of welders.

FOR TRADE & SERVICES GENERAL CONTRACTING HEAVY AND LIGHT VEHICLE RENTAL



ADDRESS: IRAQ, KARBALA HEYY FARIS

EMAIL: semo.almukhayam@gmail.com

Website: <http://semo-al-mukhayam-co-ltd.business.site/>

Mobile Contact: +964 782 691-9991

+964 782 854-8866



FOR TRADE & SERVICES GENERAL CONTRACTING HEAVY AND LIGHT VEHICLE RENTAL

8.3. NDT/PWHT Requirements

8.3.1. NDT personnel shall follow the general requirements, training, qualification examinations and certification as per SAEP-1142, Qualification of NDT Personnel.

8.3.2. NDT/ PWHT requirements shall be in accordance with S-000-1360001 Attachment 4, S-000-3160-002 Attachment 6 and each Isometric and Spool Drawings

8.4. Field and Installation

8.4.1. Internal Lined Piping (Line Class: xxLExxx)

8.4.1.1 There is no field weld for internal lined piping for this project basically.

8.4.1.2 Precaution not to heat on the spool (avoid damage of lining). Flange connection should be done with proper procedure as per para 9.5.

8.4.1.3 Maximum 6 meters to 12 meters length from open end depending on pipe size can be allowed for application of internal lining on girth welding point. Welding point to be lined shall be located within a certain length from open end. Welding point of internal lining work shall be hand-over to other party. Erection of next spool shall be after inspection of lining on the point is acceptable. This condition shall be applicable for the piping system which has internal lining, but not to the others.

8.4.2. Stainless steel Material Fabrication (Line Class: xxSDxxxx)

8.4.2.1 Working tools for stainless steel including cutting, grinding, and buffing discs, wheels, or brushes shall be intended for stainless steel work and shall be easy to recognize by means of color coding or tape marking, recommended color is red. Tools such as grinding wheels and wire brushes previously used on carbon steel shall not be used on stainless steel or nickel alloy materials. Only 300 series stainless steel brushes shall be used on austenitic and nickel alloys. (Ref. PFI Standard ES-43 para.3.2 & 3.4)

8.4.2.2 Straight pipe cutting, and pipe end preparation shall be carried out using plasma or mechanical cutting. Cleaning shall be applied when there is scale on surface.

8.4.2.3 Segregate pipe spool from other materials when temporary laid down at job site or at fabrication shop prior to erection or fabrication.

8.4.2.4 Approved marking materials shall only be used for Stainless steel. Any marking or color coding shall be done with materials having a water-soluble chloride content not exceeding 50 ppm, measured after the marking materials has dried. (Ref. PFI Standard ES-43 para 4.2)

8.4.2.5 Back purging shall be maintained until at least 10 mm of the weld deposit thickness has been completed. The use of nitrogen as a backing gas for austenitic stainless steels is prohibited.



ADDRESS: IRAQ, KARBALA HEYY FARIS

EMAIL: semo.almukhayam@gmail.com

Website: <http://semo-al-mukhayam-co-ltd.business.site/>

Mobile Contact: +964 782 691-9991

+964 782 854-8866



FOR TRADE & SERVICES GENERAL CONTRACTING HEAVY AND LIGHT VEHICLE RENTAL

8.4.2.6 Sponge jig shall be used to keep back seal gas inside. Obtain approval from Client if other kinds of material are used like soluble purge dam paper, PVOH film. The kind of Item shall be filled in Daily Welding Report (DWR). Refer to S-000-3160-002.

8.4.3. Cutting disk or flame cutting shall be used for cutting carbon steel pipes, beveling is also acceptable only flame cut bevels shall be ground to a smooth finish, nicks and grooves in the bevel are not allowed.

8.4.4. For low alloy steel, Flame cut or mechanical means such as cutting disk are acceptable. After flame cutting, approximately 1.5mm of material must be removed from the surface of beveling by grinding.

8.4.5. Joint Fit-Up/Welding

8.4.5.1 Butt Joints

8.4.5.1.1 Prior to welding check for cleanness of inside piping, cleanliness of groove, alignment of piping and bevel angle and root face for any deficiencies.

8.4.5.1.2 Assure for suitable screen or shelters for protection from weather. Welding work shall not be done in case of rainy and storm winds.

8.4.5.1.3 Unless specified otherwise in the qualified welding procedure, a root gap of about 3 mm shall be required for joints (including branch connections). One exception is that where the pipe wall thickness is less than 4.5 mm, a 1.5 mm root gap shall be used with tolerances of +1.5 mm and minus zero. No gap larger than 1.5mm, measured before welding, shall exist between the periphery of a reinforcing pad and the pipe to which it is attached. Internal misalignment of butt joints shall not exceed 1.5 mm.

8.4.5.1.4 GTAW process shall be used for piping and set-in fittings less than 25.4 mm nominal pipe size for all passes thru butt welding.

8.4.5.1.5 GTAW process shall be used for the root pass of butt welds without backing in piping and set-in fittings of 50.8 mm nominal pipe size or less, except for vent and drain piping open to the atmosphere.

8.4.5.1.6 GTAW process shall be used for the root pass of single-sided groove welds without backing made with stainless steel or nickel-based consumables.

8.4.5.1.7 Assure that welding procedure strictly adheres to the applicable Welding Procedure Specification.

8.4.5.2 Socket Joints

8.4.5.2.1 Gap control for socket weld shall be in accordance with (Special Process Procedure for Gap Control for Socket Weld and Back Welded Threaded Fittings).

8.4.5.2.2 The axial gap between male and female component shall be maximum of 3mm and minimum of 1.5 mm refer to S-000-3160-002 section 6.4.2



ADDRESS: IRAQ, KARBALA HEYY FARIS

EMAIL: semo.almukhayam@gmail.com

Website: <http://semo-al-mukhayam-co-ltd.business.site/>

Mobile Contact: +964 782 691-9991

+964 782 854-8866



FOR TRADE & SERVICES GENERAL CONTRACTING HEAVY AND LIGHT VEHICLE RENTAL

8.4.5.3 Threaded Piping

8.4.5.3.1 Prepare cutting and threading equipment and tool for each type of materials, thickness, and diameter range. Cutting and threading tools used for carbon steel shall not be used for cutting stainless steel pipes to prevent contamination.

8.4.5.3.2 Tools for carbon steel pipes shall be color-coded to avoid mix-up use with stainless and non-ferrous alloy steel pipes.

8.4.5.3.3 Before cutting, ensure correct cutting lines are marked on pipe according to spool drawings.

8.4.5.3.4 The minimum length of the engaged threads pipe shall meet the requirements of ASME B1.20.1 for taper pipe thread. The minimum number of engaged pipe threads shall meet the requirements of Table 1 of SAES-L-110 "Limitations on Pipe Joints and Components".

8.4.5.3.5 If seal welding is required for threaded connections, it shall adhere to the requirements specified in Para.8 of SAES-L-110.

8.4.5.3.6 If seal weld is not required for design temperature of 400°F (204°C) and below use Loctite or PTFE joining tape or approved joining compound.

8.4.5.3.7 Design temperature of above 400 °F (204 °C) shall be Seal weld wherever possible, otherwise jointing compound must be applied after approval.

8.4.5.3.8 Threaded plugs on hydrostatic vents, not provided with a valve, shall be seal welded after testing has been carried out.

8.4.5.3.9 Sealing compounds or tapes shall not be used on joints that are to be seal welded.

8.4.5.4 Tolerances

8.4.5.4.1 For fabricated piping the dimensional tolerance shall be limited to the value.

8.4.5.4.2 Piping 3 inches nominal pipe size and above and connected to machinery/equipment, flange alignment shall be within the following limits.

8.4.5.4.2.1 Vertical bolt hole offset of ± 2.4 mm

8.4.5.4.2.2 Horizontal bolt hole offset of ± 2.4 mm

8.4.5.4.2.3 Rotational offset of ± 2.4 mm

8.4.5.4.2.4 Flange face tilt across diameter:

0.025mm per 25 mm (0.001 inch per inch) of flange outside diameter up to a maximum of 0.672 mm (0.030 inch), and 0.254mm (0.010 inch) for all flanges with an outside diameter less than 10 inches.

8.4.5.4.2.5 Flange face separation, gasket thickness: ± 1.6 mm.

8.4.5.4.2.6 Combination of vertical, horizontal, and rotational offset: ± 3.2 mm.



ADDRESS: IRAQ, KARBALA HEYY FARIS

EMAIL: semo.almukhayam@gmail.com

Website: <http://semo-al-mukhayam-co-ltd.business.site/>

Mobile Contact: +964 782 691-9991

+964 782 854-8866



شركة سمو المخيم

للتجارة العامة والخدمات والمقاولات

8.4.5.5 Prior to fit-up, pipe materials for spool field fabrication shall be checked for traceability marking and ensure the materials are in accordance with the approved spool/isometric drawing.

8.4.5.6 Pipe to be welded shall be fixed with the use of jigs, clamps, or direct tack welding. Tack welding and/or full welding shall be qualified according to the approved applicable WPS.

8.4.5.7 Tack welds shall be of sufficient size to maintain joint alignment. The recommended tack thickness shall be 3.2-4.8mm and length shall be 12.5-25.4mm. The minimum number of tack welds shall be:

8.4.5.7.1 Pipe diameter of 101.6mm or less: three (3) equally spaced tacks.

8.4.5.7.2 Pipe diameter above 101.6mm minimum of four equally spaced tacks. The designated inspector should determine if more tacks are needed.

8.4.5.8 Bridge tack (located above the root area) are acceptable.

8.4.5.9 Temporary weld attachments for temporary handling and support shall be subject to approval and shall be removed according to an approved procedure and ground flush with the base material subject to non-destructive testing (magnetic particle or Dye Penetrant). These temporary attachments shall be made with compatible material.

8.4.5.10 Flange face surfaces shall be protected during fit-up by putting suitable cover/duct tapes to meet acceptance criteria.

8.4.5.11 Bolt holes of flange joints shall be installed to be symmetrical against the vertical and horizontal centerline of the pipe and shall match the orientation of the matting flange, unless otherwise indicated on the relevant drawings.

8.4.5.12 For large flanges, flange jack shall be used when lifting is needed.

8.4.5.13 Pipe spool open ends shall be protected with end caps where dirt, dust and other foreign objects will be prevented from getting inside the pipe spools. In addition, pipe ends shall be invariably always protected.

8.4.5.14 Flattening of bends, measured as the difference between the largest and the smallest outside diameter at any cross section, shall not exceed 5% of the nominal diameter of the pipe. Flattening of bends at weld ends shall not exceed 3% of the nominal pipe diameter.

8.4.5.15 SAACO piping inspector shall verify and document work compliance prior to welding of spools where the following is applicable:

8.4.5.15.1 Bevel angle, root opening and tack weld shall be in accordance with the approved WPS and ASME B31.3 Section 328.4.2 and 328.4.3.

8.4.5.15.2 All surfaces to be welded shall be clean and free from paint, oil, dirt, scale, and foreign material detrimental to welding as specified in ASME B31.3 Section.

328.4.1. 8.4.5.15.3 Alignment of pipe inside surface shall be within the dimensional limits of approved WPS and ASME B31.3 Para. 328.4.3.

8.4.5.15.4 Weld seams shall be staggered and located in such a way that they shall not intersect openings and external attachments.

8.4.5.15.5 Foreign materials inside the pipe shall be removed.

FOR TRADE & SERVICES GENERAL CONTRACTING HEAVY AND LIGHT VEHICLE RENTAL



ADDRESS: IRAQ, KARBALA HEYY FARIS

EMAIL: semo.almukhayam@gmail.com

Website: <http://semo-al-mukhayam-co-ltd.business.site/>

Mobile Contact: +964 782 691-9991

+964 782 854-8866



8.4.6. Pipe Spool Painting

8.4.6.1 Painting work shall be done in accordance with S-000-13A0-001.

9.0 METHODS / PROCEDURE

9.1. Pipe Installation on Pipe Rack

9.1.1. Prior to installation/erection, bellow 30 inches diameter pipes shall be internally cleaned by air blowing, 30 inches and above pipe diameter shall be cleaned by manual such as rags or cloth, sweep cleaning shall be applied instead of air blowing. All prefabricated pipe spools shall be visually inspected for cleanliness, any matter or debris found inside the pipeline shall be removed. Piping Internal cleaning procedure shall be in accordance with JGC Specification (S-000-3160-004: Piping Pressure Test Procedure)

9.1.2. Piping end shall be covered after inspection and care shall be exercised during installation/erection to prevent damage. Cover end of piping until fit up of joint to succeeding pipe section as per SAES-L-350 sect.15.2.

9.1.3. Prior to installation/erection on pipe rack structure, the following shall be served using authorized benchmark.

9.1.3.1 Center line of pipe shall be put on the beam.

9.1.3.2 Coordinates of interface point shall be checked.

9.1.3.3 Pipe spools to be erected on pipe rack structure shall be erected to position using crane and chain blocks to facilitate pulling/moving of pipe spools to inner portion of the pipe rack steel structures and piping around equipment as applicable. Use only nylon sling for erection of coated pipes and pipes supports.

9.1.4. Erection of random pipes shall start from the opening end of the pipe rack structures shall be erected to position using crane, pipe rollers and chain block to facilitate of pulling/moving of random pipes at the inner portion of the pipe rack steel structures. Use only nylon sling for erection of coated pipes.

9.1.5. Erection/installation of 24 inches and above internal lining spool on pipe rack structure shall start from the spool with stopper support.

9.1.6. Piping Installation Scheme Using Pipe roller at any applicable Piperack.

9.1.6.1 Pipes will be loaded using cranes into the extended scaffolding at the designated/end of pipe rack or side loading if possible.

9.1.6.2 Install extended scaffolding at designated loading area at first level. Once the erection of pipes at this level was completed, additional extended scaffold will be installed for the next elevation. Additional hanging scaffold with access walkway will be installed for fit-up and full welding of pipe joints and supports not accessible by the hanging mat scaffold.

FOR TRADE & SERVICES GENERAL CONTRACTING HEAVY AND LIGHT VEHICLE RENTAL



ADDRESS: IRAQ, KARBALA HEYY FARIS

EMAIL: semo.almukhayam@gmail.com

Website: <http://semo-al-mukhayam-co-ltd.business.site/>

Mobile Contact: +964 782 691-9991

+964 782 854-8866



شركة سمو المخيم للتجارة العامة والخدمات والمقاولات

9.1.6.3 Install, align and fix the pipe roller assemblies at rack beams. Pipe rollers will be employed primarily to move random lengths along the racks.

9.1.6.4 Install pulley complete with pull cable. The pulley and cable will be used to pull the pipes from loading end, along the pipe rollers, and to its final location.

9.1.6.5 Cranes will pick up the pipes either directly from trailers or from temporary lay down nearby the pipe rack.

9.1.6.6 Pipes will be lifted by cranes using correct nylon slings and will be rigged to position at pipe rollers in working platform.

9.1.6.7 Welding together of 6.0m random lengths to make 12m can be done optionally at ground level. RT shall be carried out on ground after double jointing (as applicable).

9.1.6.8 Once the pipe is initially positioned at pipe rollers (two spans), hook the pipe to a pull cable. A special hook attachment will be used so as not to damage bevel at pipe ends.

9.1.6.9 While the pipe is being pulled, a watcher will check the travel of pipe such that it will safely and correctly ride the succeeding pipe rollers. A signaling system for safe execution and control of pulling will be employed.

9.1.6.10 Once the length of pipe reaches its destination, it will be removed from pipe rollers using chain blocks.

9.1.6.11 Succeeding pipe lengths will be brought to its designated position.

9.1.6.12 Pipe spools such as expansion loops, branch take-offs and others will be placed directly in position using cranes and/or chain blocks where required. Fit up and welding of spooled pieces will be done in place utilizing the mat type of scaffold or localized scaffold.

9.1.6.13 For pipelines without attachments, a double-ended welding execution will be adopted- i.e., the first two random length rigged to position will be fitted up and full welded together. The succeeding lengths will be installed in the same manner. The double-ended lengths are then welded together until the entire run is completed. RT shall be carried out on the ground after double jointing (as applicable).

9.1.6.14 At interconnecting pipe racks, the same roller system will be utilized where new steel works is installed and when there are no obstructions.

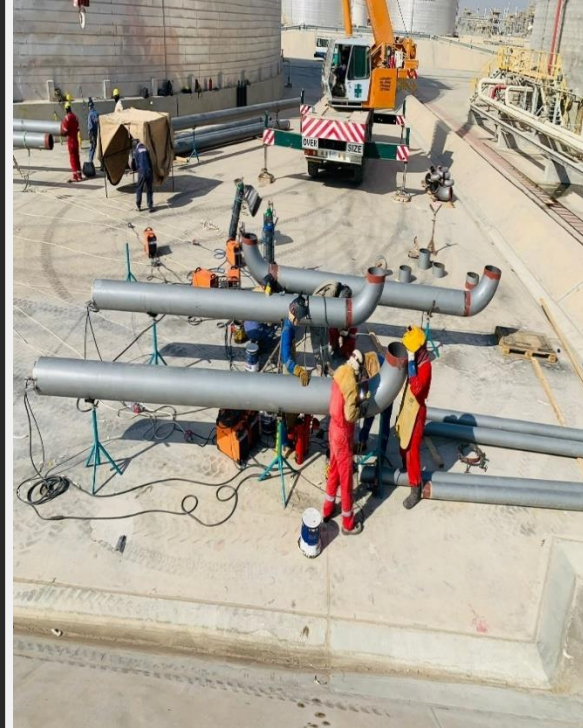
9.1.6.15 For piping sequence see attached attachment 2.

9.2. Piping Installation Around Equipment

9.2.1. Erection of pipe spools shall start from static equipment nozzles where spool flanges are fitted to equipment nozzle flanges. Do not tight the bolt on rotary equipment flange and pipe unless witnessed or checked by rotary Supervisor.

9.2.2. Blind spade/gasket shall be installed between equipment nozzle and pipe spool to avoid contamination until completion of piping pressure test.

FOR TRADE & SERVICES GENERAL CONTRACTING HEAVY AND LIGHT VEHICLE RENTAL



ADDRESS: IRAQ, KARBALA HEYY FARIS

EMAIL: semo.almukhayam@gmail.com

Website: <http://semo-al-mukhayam-co-ltd.business.site/>

Mobile Contact: +964 782 691-9991

+964 782 854-8866



FOR TRADE & SERVICES GENERAL CONTRACTING HEAVY AND LIGHT VEHICLE RENTAL

9.2.3. Piping installation shall be conducted after receiving of "Work Release Notice" from mechanical section.

9.2.4. It shall be confirmed whether the flange faces for inlet and outlet nozzles of the rotary machine are free from damage and distortion. The flange facing shall be judged by visual comparison with a comparison block of Ra Standards conforming to ASME B46.1.

9.2.5. Temporary gasket shall be inserted between flange face and nozzle of the rotary machine so that necessary space between them can be kept. The temporary gasket shall be a blind gasket to avoid entry of foreign materials into the rotary equipment and shall be made of soft materials such as sheet gasket to avoid any damage to the flange face. It shall be kept in position until final flange alignment. The size of temporary gasket shall be wider than flange dimension.

9.2.6. Field welding which affects the alignment of the rotary machine nozzle flange and piping flange shall be done by a method enabling the minimization of distortion due to welding. The rotary equipment nozzle flange and piping flange shall be isolated during field welding, do not install bolt and nuts.

9.2.7. Heat by welding and PWHT on first piping nozzle flange shall not transfer to the flange of equipment.

9.2.8. The final flange alignment of piping connected to rotary machines shall be conducted after all items of piping work including pressure tests, cleaning work, etc. are completed.

9.2.9. Remove all temporary supports. Spring supports shall be kept in a fixed condition.

9.2.10. All protective covers and plugs on the equipment nozzles shall be maintained until the piping is ready to connect to the nozzle.

9.2.11. Welding on piping connected to equipment is not allowed unless the welding machine ground lead is connected directly to the part being welded. This is to avoid damage to the equipment by stray electrical currents.

9.2.12. Pipe flange faces connecting to the primary flange of rotating equipment shall be aligned and within the limits or tolerance.

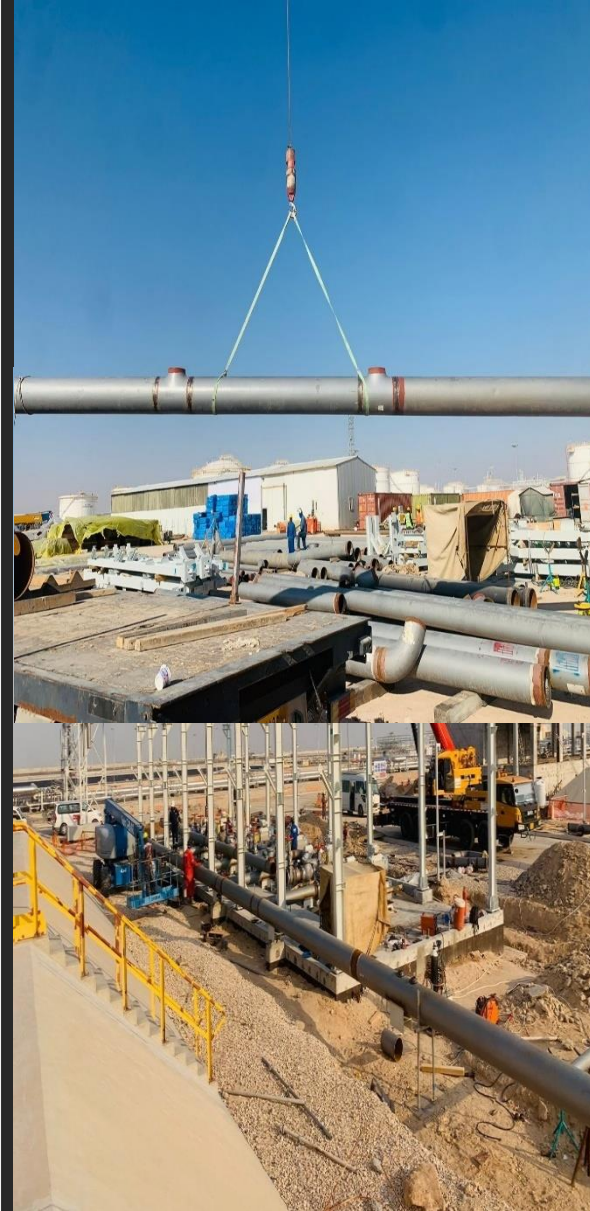
9.2.13. Proceed to initial tightening of flange bolts in snug-tight condition using hand wrench. Tightening of bolts shall be done in accordance with SAEP351.

section 7.

9.2.14. After initial alignment the rotary machine nozzle and piping shall be disconnected from each other and checked to confirm that the tolerances are adhered to.

9.2.15. If specified tolerance is not satisfied, loosen piping flanges from the equipment so correction shall be made to piping or supports.

9.2.15.1 Adjust the piping supports.



ADDRESS: IRAQ, KARBALA HEYY FARIS

EMAIL: semo.almukhayam@gmail.com

Website: <http://semo-al-mukhayam-co-ltd.business.site/>

Mobile Contact: +964 782 691-9991

+964 782 854-8866



9.2.15.2 Adjust the flange connection of the piping in combination with the method.

9.2.15.3 Adjust the piping by cutting and re-welding of appropriate portion of the piping. Hydrostatic test or equivalent test shall be made for the concerned piping spool.

9.2.15.4 Proceed with above steps until the required shaft movement is attained and hand bolting is finalized.

9.2.15.5 After confirmation of the final flange alignment, permanent gaskets shall replace temporary ones and all flange bolts shall be equally and fully tightened with sufficient care.

9.2.16. After final bolt-up, final shaft alignment shall be verified, and the equipment shall be hand rotated to ensure that neither binding nor case distortion has occurred during piping installation.

9.3. Piping Installation at Pipe Sleeper

9.3.1. Piping installation at pipe sleeper and other areas shall utilize cranes or manual rigging method (sticking-out method) to directly install the spool and straight lengths into position.

9.4. Installation of Pipe Support

9.4.1. Pipe supports, anchors, pipe guides, and shoes, etc. shall be installed in proper position in accordance with relative drawings such as standard support drawings, ISO drawing and spool drawing. Refer to S-000-3160002 section 6.7 for Pipe Support Construction Requirements.

9.5. Flange Joint Tightening

9.5.1. Gasket Installation

9.5.1.1 The gasket shall be verified for correct type, rating, dimension, and compatibility with the flange facing. It shall be free from any damage particularly in the seating element.

9.5.2. Manual Torque

9.5.2.1 When flange bolts are tightened, the alignment of the centerline and parallelism of the flange faces shall be checked, and all the bolts shall be tightened equally with sufficient care.

9.5.2.2 Lubricant for bolts and nuts shall be Jet-Lube SS-30 or other acceptable lubricants.

9.5.2.3 Select the correct size and hex / socket of torque wrench as applicable.

9.5.3. Hydraulic Torquing / Tensioning

9.5.3.1 Hydraulic Bolt Tensioning requires a specialist skill. Only operatives trained and competent person to use the equipment and up to the standards shall carry out the controlled breakout/assembly and tightening of bolted flanged connections. Subcontractor for hydraulic bolt tensioning shall be approved by Company.

FOR TRADE & SERVICES GENERAL CONTRACTING HEAVY AND LIGHT VEHICLE RENTAL



ADDRESS: IRAQ, KARBALA HEYY FARIS

EMAIL: semo.almukhayam@gmail.com

Website: <http://semo-al-mukhayam-co-ltd.business.site/>

Mobile Contact: +964 782 691-9991

+964 782 854-8866



FOR TRADE & SERVICES GENERAL CONTRACTING HEAVY AND LIGHT VEHICLE RENTAL

9.5.3.2 Set the torque value on the console by setting the Torque Control Knob according to the desired bolt torque for tightening or loosening as applicable.

9.5.3.3 Bolt tensioner shall be used.

9.5.3.4 All flanges and bolt shall be prepared and pre-assembled prior to tensioning.

9.6. Pressure Testing and Lay-up

9.6.1. Approved test package shall be made available for reference in setting up the pressure test of line or system.

9.6.2. Prior to test, weld lines shall be thoroughly dry, cleaned of rust, grease, paint, or other contaminants.

9.7. Touch-Up and Coating

9.7.1. The touch-up and repair of coated surfaces at construction site shall follow Table A of S-000-13A0-001 "Supplementary Specification for External Coating".

9.7.2. External coating schedule for underground piping shall be referred to the individual data sheets, piping line index.

9.8. Insulation (by another sub-contractor)

9.8.1. Insulation shall be always protected from moisture and rain. Installed insulation shall be dry prior to application of weather proofing jacketing or mastic, refer to specification no. S-000-1390-001 General Specification for Insulation,

9.9. Restoration

9.9.1. Remove all temporary items that are installed during Testing.

9.9.2. Items that were removed during testing shall be reinstalled. Items such as instrument air tubing, check valves disc which were disconnected before testing shall be re-connected.

9.9.3. Inspect restoration of piping system, verify-assembly and flow arrow direction of valves and other miscellaneous components where applicable.

10.0 QUALITY CONTROL

10.1. QC personnel shall be assigned to ensure the quality control and assurance requirement of the project.

10.2. QC Inspector shall coordinate with other inspectors to conduct inspection as required in SATIP Piping Above ground Installation Works.

10.3. QC Inspector shall be responsible to conduct all required inspections/documentation and to ensure that all applicable requirements, codes, and standards are complied with.

10.4. Contractor must utilize the applicable for every activity.

10.5. Mill test reports for the structural materials are furnished and verify confirmation to the requirements of the applicable specification.

10.6. Full traceability of piping and structural shall be done in accordance with schedule Q and Specification (S-000-1630-011: Material Traceability at Site (Construction Phase))

10.7. Calibration shall be done as required for all machines and tools going to be used in the work in accordance with schedule Q.

10.8. Selection of gasket shall be done in accordance with ASME B16.20.



ADDRESS: IRAQ, KARBALA HEYY FARIS

EMAIL: semo.almukhayam@gmail.com

Website: <http://semo-al-mukhayam-co-ltd.business.site/>

Mobile Contact: +964 782 691-9991

+964 782 854-8866



FOR TRADE & SERVICES GENERAL CONTRACTING HEAVY AND LIGHT VEHICLE RENTAL

11.0 SAFETY PRECAUTION

Obtain the approval of the work permit from the concerned Representative before starting any work.

11.1. Fire Watcher with Fire Extinguisher shall be at work area whenever there is hot work. Fire Watcher remains on welding area for 30 minutes after welding is complete.

11.2. All electrical tools shall be checked and color-coded.

11.3. Fire Points on all levels by access tower. Plastic drums shall be provided with buckets are to be marked with the word "Fire."

11.4. Continuous monitoring and inspection shall be implemented to detect and correct unsafe practices while performing the work activities.

11.5. Provide warning sign and sufficient barricade on working area and only assigned personnel will be allowed in the area.

11.6. Welding location shall be enclosed with wind barrier and provided with non-asbestos fire blanket to prevent spread of any welding sparks.

11.7. Safety harness with double lanyards shall be used all the time when working at elevated temporary platforms 1.8 meters high and above.

11.8. Man lift users shall be trained and certified to operate and use the equipment.

11.9. Safety Supervisor shall monitor the work activities to help and to protect all assigned workers against exposure to safety hazards. He shall ensure that Personal Protective Equipment (PPE's) are supplied by Supervisor and used and comply with JGC applicable standards.

11.10. All rigging equipment shall be in good condition and possess a valid certification from authorized certifying and inspection department inspection and color coding shall be done in accordance will inspection guideline.

11.11. Toolbox meeting shall be conducted by Piping Supervisor daily so as work activities will be properly coordinated to all concerned and all safety infractions will be acted immediately.

11.12. Good housekeeping shall be maintained and working area shall be kept in a clean and tidy manner.

11.13. Job Hazard and Risk Assessment (JHRA) shall be disseminated and explained to workers prior to start of work.

11.14. Safety Requirements for Scaffolding shall be obtained during construction of Scaffolding. A JSA or JHA is required.



ADDRESS: IRAQ, KARBALA HEYY FARIS

EMAIL: semo.almukhayam@gmail.com

Website: <http://semo-al-mukhayam-co-ltd.business.site/>

Mobile Contact: +964 782 691-9991

+964 782 854-8866



شركة سمو المخيم للتجارة العامة والخدمات والمقاولات 7- Steel structure

We did steel structural work with the Mega company in the Karbala depot project, and we finished according to client quality and safety and period.

1.0 PURPOSE

1.1 This work shall provide minimum guidelines to carry out the modification works for steel structure activities for commercial buildings, plants, and refineries to ensure that the work is carried out in accordance with Project Drawings and Project Specifications.

2.0 SCOPE

2.1 This document will cover the modification works for steel structure of commercial buildings, plants, and refineries.

3.0 APPLICABLE DOCUMENTS

3.1 Project Specification and Standards

4.0 RESPONSIBILITY

4.1 Construction Manager shall be responsible for all HSE matters and to study, analyze and schedule all construction activities with his department to include manpower and equipment line up as well as other possible resources required for the successful implementation of the construction work activities. Study all aspects of work procedure as per Technical Scope of Work.

4.2 Structural Supervisor shall study and review all necessary documents for the modification works in his area to include, technical scope of work, specification, bill of quantities, planned milestone dates and construction procedure in support to his Structural Foreman. He shall monitor the availability of materials in accordance with the schedules and construction analysis. He shall be directly reporting to the Construction Manager. He shall coordinate with other discipline to visualize possible conflicts in the drawings as well as in the schedules to provide other options in preventing unnecessary delays obstructions.

4.3 Structural Foreman shall be responsible for the direct work supervision at site.

and ensure that the work is performed in accordance with Technical Scope of Work and latest approved for construction drawings. He shall monitor the availability of materials in line with his required schedule.

FOR TRADE & SERVICES GENERAL CONTRACTING HEAVY AND LIGHT VEHICLE RENTAL



ADDRESS: IRAQ, KARBALA HEYY FARIS

EMAIL: semo.almukhayam@gmail.com

Website: <http://semo-al-mukhayam-co-ltd.business.site/>

Mobile Contact: +964 782 691-9991

+964 782 854-8866



شركة سمو المخيم

للتجارة العامة والخدمات والمقاولات

4.4 Surveyor shall study and analyze if the location where the structure should be installed satisfies the condition or restriction of erection works on site. He shall coordinate with other discipline to visualize possible conflicts in the drawings as well as in the schedules to provide other options in preventing unnecessary delays obstructions.

4.5 QC Inspector shall be responsible in monitoring and inspection of the work and ensure that the work is performed in accordance with Technical Scope of Work and Standards.

4.6 Safety Engineer/Supervisor shall be responsible in monitoring safety aspects and ensuring that the work is done in accordance with Safety Standard Procedure. He shall give reminders or advise to all workers to do the activity safely.

5.0 MANPOWER

5.1 Manpower will consist of the following, but not limited to as listed to as below:

- Structural Supervisor
- Structural Foreman
- Welding Foreman
- Welders
- Crane Operator
- Rigger
- Manlift operator
- Steelworkers
- Structural fitters
- Fire Watchers
- Safety Engineer/Supervisor
- QC Inspector
- Helpers

6.0 TOOLS AND EQUIPMENT

6.1 Tools and equipment needed should be in good condition and must be checked.

by Structural Supervisor / Safety Officer prior to use in the good condition area.

These includes but not limited as below:

- Clamps
- Cutting torch/gauging
- Grinder
- Welding machine
- Mobile Crane
- Manlift
- Forklift
- Chain puller/blocks
- Wrenches
- Nylon Slings
- Hand tools / jigs
- Hydraulic jack
- Annular cutter/magnetic drill

**FOR TRADE &
SERVICES
GENERAL
CONTRACTING
HEAVY AND LIGHT
VEHICLE RENTAL**



ADDRESS: IRAQ, KARBALA HEYY FARIS

EMAIL: semo.almukhayam@gmail.com

Website: <http://semo-al-mukhayam-co-ltd.business.site/>

Mobile Contact: +964 782 691-9991

+964 782 854-8866



شركة سمو المخيم
للتجارة العامة والخدمات والمقاولات

7.0 METHODS | PROCEDURES

7.1 Preparatory Works

- 7.1.1 QC to prepare Quality Control Inspection Report (QCIR).
- 7.1.2 Prepare Request for Information (RFI) regarding deficiency/field suit of prefabricated materials.
- 7.1.3 Secure Site Instruction regarding modification works to be done.
- 7.1.4 Prepare all tools and equipment needed.
- 7.1.5 Provide access scaffolding if required.

7.2 Modification Works

- 7.2.1 Cutting of Shear key.
 - 7.2.1.1 Remove shear key by gas cutting.
 - 7.2.1.2 Flash grind excess material if it is undercut or build-up if it is over-cut.
 - 7.2.1.3 After flashing/welding works touch-up paint as required.
- 7.2.2 Provision / Increasing of notch (beam's flange, gratings etc.)"
 - 7.2.2.1 Cutting by using grinder.
 - 7.2.2.1.1 Cut the member by grinding in accordance with the latest Approved for Construction (AFC) drawing / field suit dimension as per issued Request for Information (RFI).
 - 7.2.2.1.2 Clean the edge of the cut portion as a surface preparation for touch-up painting of the affected area.
 - 7.2.2.1.3 QC Inspection to verify dimensionally, acceptability of the cut portion.
 - 7.2.2.2 Gas-cutting
 - 7.2.2.2.1 Cut the member to the required dimension by oxy acetylene gas-cutting in accordance with the latest Approved for Construction (AFC) drawing / field suit dimension as per issued Request for Information (RFI). Flame cutting only on dimension changes, no flame cutting of bolt holes is allowed.
 - 7.2.2.2.2 Proper care should be taken to avoid unnecessary damage and deformation of the member.
 - 7.2.2.2.3 Flush surface and if necessary, build-up deep marks and notches caused by torch cutting.
 - 7.2.2.2.4 QC Inspection to verify dimensionally, acceptability of the cut portion.
 - 7.2.2.2.5 Touch-up painting of the affected area.
- 7.2.3 Bolt hole distance discrepancy
 - 7.2.3.1 Plug-weld the existing bolt hole in accordance with AWS D1.1.
 - 7.2.3.2 Conduct PT as required.
 - 7.2.3.3 Lay-out and drill required/corrected bolt hole.
 - 7.2.3.4 QC Inspection verifying/checking the lay-out dimension.
 - 7.2.3.5 Drill bolt holes using magnetic drill or annular cutter.
 - 7.2.3.6 Touch-up painting of the affected area.

FOR TRADE & SERVICES GENERAL CONTRACTING HEAVY AND LIGHT VEHICLE RENTAL



ADDRESS: IRAQ, KARBALA HEYY FARIS

EMAIL: semo.almukhayam@gmail.com

Website: <http://semo-al-mukhayam-co-ltd.business.site/>

Mobile Contact: +964 782 691-9991

+964 782 854-8866



7.2.4 Bolt hole enlargement

7.2.4.1 Re-drill bolt holes as per fabrication drawing and/or enlarge using pencil grinder.

7.2.4.2 Touch-up painting of the affected area.

7.2.5 Additional Bolt holes

7.2.5.1 Lay-out and mark the additional bolt hole location as per latest Approved for Construction (AFC) fabrication drawing.

7.2.5.2 QC Inspection verifying/checking the lay-out dimension.

7.2.5.3 Drill the required bolt holes using magnetic drill or annular cutter.

7.2.5.4 Touch-up painting of the affected area.

7.2.6 Additional gusset / connector plate / base plate / etc.

7.2.6.1 Lay-out and mark the location of the additional gusset/connector plate/base plate as per latest Approved for Construction (AFC) fabrication drawing.

7.2.6.2 Prepare the surface by grinding to remove the paint of the location where the additional will be welded.

7.2.6.3 Proper care should be taken to avoid unnecessary damage and deformation of the members.

7.2.6.4 Flush surface and if necessary, build-up deep marks and notches caused by torch cutting or gauging to both members.

7.2.6.5 Conduct PT as required.

7.2.6.6 Fit-up gusset plate to corrected location.

7.2.6.7 QC Inspection checking dimensionally alignment and acceptability of the fit-up.

7.2.6.8 Upon acceptance, full welding shall commence and to be completed as per approved project WPS / PQR.

7.2.6.9 Conduct NDE as required.

7.2.6.10 Clean and prepare surfaces of affected area.

7.2.6.11 Touch-up painting of the affected area.

7.3 Painting

7.3.1 Clean and prepare surfaces to be painted using power brush.

7.3.2 Apply necessary coats as per required paint system and let dry. Painting shall be in accordance with Standard.

7.3.3 Painting shall match with the existing painting color.

8. QUALITY CONTROL

8.1 ARCC QC Inspector will be assigned to attend to the quality control and assurance of this work.

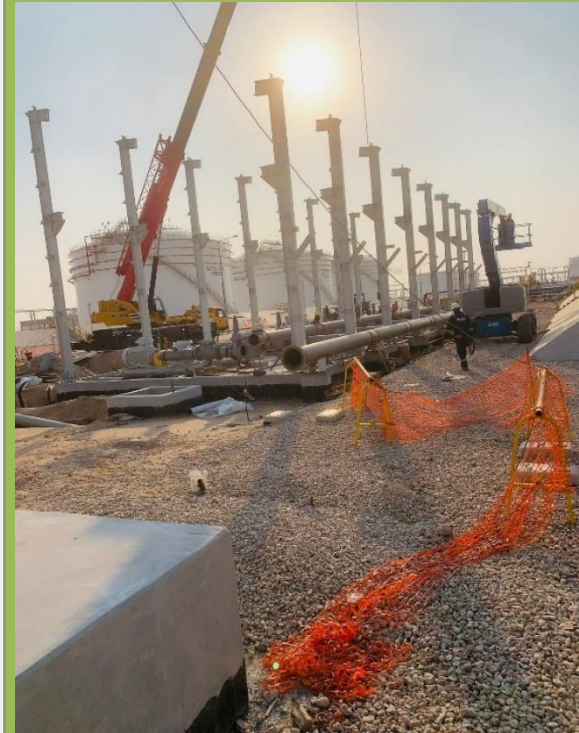
8.2 QC Inspector shall be responsible to conduct all required inspection as detailed in S-000-3130-002 to ensure that all applicable requirements, codes, and standards are complied with.

8.3 QC Inspector will produce all the documents attesting to the acceptability.

of the works and submits.

8.4 QC Inspector must utilize the applicable SATIP's & SAIC's for every activity.

FOR TRADE & SERVICES GENERAL CONTRACTING HEAVY AND LIGHT VEHICLE RENTAL



ADDRESS: IRAQ, KARBALA HEYY FARIS

EMAIL: semo.almukhayam@gmail.com

Website: <http://semo-al-mukhayam-co-ltd.business.site/>

Mobile Contact: +964 782 691-9991

+964 782 854-8866



9 SAFETY PRECAUTION

9.1 Approved work permit should be obtained prior to the start any repair works.

9.2 Work execution shall be carried out in accordance

9.3 Erection crew must carry out a safety risk assessment prior to the start of any new activities.

9.4 The necessary manpower inclusive of supervisory staff, tools, equipment, materials, and other resources required must be made available and ready to use.

9.5 Workers should wear their PPE's needed for work.

9.6 Certified permit receiver, traffic/flagman and work-in-charge should be at work site during the execution of the work.

9.7 Personnel who will be working from a suspended workbasket should secure Suspended Personnel Work Basket Authorization / Permit prior to start work.

9.8 Manlift equipment shall be tested and certified by Equipment Inspection Division.

9.9 Only certified manlift operator(s) shall be allowed to operate the manlift equipment.

9.10 Sufficient lightings shall be provided if work is done at nighttime. Work at night shall be approved by client.

9.11 Full body harness with double lanyards shall be always when working at elevated platforms 1.8 meters high and above.

9.12 Good housekeeping must be maintained in the duration of works.

9.13 Safety Supervisor/Engineer shall monitor compliance of entire working crew to safety procedure until the work is fully completed.

9.14 shall make sure that all shall be incident and injury free.

9.15 The area shall be blocked by physical barricade or warning tapes during activities is to be done to ensure safety.



FOR TRADE & SERVICES GENERAL CONTRACTING HEAVY AND LIGHT VEHICLE RENTAL



ADDRESS: IRAQ, KARBALA HEYY FARIS

EMAIL: semo.almukhayam@gmail.com

Website: <http://semo-al-mukhayam-co-ltd.business.site/>

Mobile Contact: +964 782 691-9991

+964 782 854-8866



شركة سمو المخيم

للتجارة العامة والخدمات والمقاولات

8- Tank blasting and painting

our team did in the Karbala refinery project and water intake with many companies.

1. RESPONSIBILITY

5.1 Project Manager / Manager Projects(s) It is the responsibility of Project Manager to support the entire project site, provide all the resources which required at the site and execution of the project in compliance to project specification and engineering practices in general with quality, safety, and schedule commitments.

5.2 SM (Site Manager) It is the responsibility of Site Manager that construction activities are executed as per project specifications, in compliance with quality, schedule & safety requirements.

5.3 SS/FE (Site Supervisor / Field Engineer)

Site Supervisor/Field Engineer will ensure that all the works are performed as per latest Issued for Construction (IFC) both the drawings & specifications.

5.4 QCE/QCI (QC Engineer / QC Inspector)

It is the responsibility of QC Engineer and /QC Inspector to ensure all the work to be done as per project specification plan.

5.5 Safety

Construction activities to be carried out with safe working environment and in accordance with approved project specific HSE plan.

6. PROCEDURE

Surface Preparation, Painting.

Prior to sand blasting and painting operations protective devices such as clothes, screens, movable walls / partition shall be provided according to work requirements to cover the surfaces & parts not requiring painting. Particular attention shall be given to protect the flange gaskets seating faces for eventual damage during blasting.

The air compressor used for blasting shall be provided with adequate separators to ensure that it is free of oil, moisture & other contaminants.

Garnets used for blasting shall be clean and free from contaminants.

All surfaces required to be painted shall be cleaned as free of grease, oil, mill scale, rust, weld spatters and all other contaminants which will cause for premature coating failure.

Prior to and during blasting, weather conditions shall be monitored and recorded.

Blasting operation shall not be performed when metal surface temperature is less than 3°C above the dew point or when the relative humidity of the air is over 90% painting shall not be applied.

The degree of cleaning shall be accordance with the applicable paint specification.

Coating materials shall be stored in protected ventilated environmental conditions according to the paint manufacturer's recommendations.

**FOR TRADE &
SERVICES
GENERAL
CONTRACTING
HEAVY AND LIGHT
VEHICLE RENTAL**



ADDRESS: IRAQ, KARBALA HEYY FARIS

EMAIL: semo.almukhayam@gmail.com

Website: <http://semo-al-mukhayam-co-ltd.business.site/>

Mobile Contact: +964 782 691-9991

+964 782 854-8866



All coatings shall be thoroughly mixed and thinned in accordance with paint manufacturer's instructions.

/ Technical data sheets just prior to coating application.

All dust and abrasive particles shall be thoroughly removed from surfaces by blowing with clean dry air before application of paint coating. All blast clean surfaces shall be coated with the specified primer within six (6) hours after blasting, before the surface starts deterioration.

The coating system used for each tank shall be as per applicable General Drawing requirement. Each coat shall be applied uniformly over the entire surface. Skips, runs, etc. shall be avoided. When these occur, they shall be brushed out and surface shall be recoated.

Scaffolding will be used in sand blasting and painting of shell plates. QCI from OD shall monitor blasting and coating to ensure they are performed according to this procedure and applicable project specifications.

Dry film thickness of each coat shall be measured and recorded using Micro test. Magnetic Gauge. At least five spots' readings shall be taken for every 10 sq. meter of painted surface area. On each spot an average of 3 readings shall be taken according to specification.

All the gauges used for measurements and meteorological data shall be duly calibrated.

All damage areas due to handling etc. shall be repaired as per the paint manufacturer's recommendations provided in paint data sheets.

After completion of blasting and painting, final report shall be prepared and signed. by OD QA/QC Engineer and presented to the client Inspector for review.

Garnet to be as per specification recycling garnet as per the vendor recommendation.

Safety measures to be done prior to and during sand blasting / painting operations. are as follows:

a) Two-way communication system covering scope of work on the day hazards

& precautionary method. If any changes in plan activity should be convey to the team through special meeting for safe environment to execute the work.

b) Safety meeting with all the involved employees to discuss the hazards on the job and review up-to-date procedures to prevent accident/s.

c) Personal protective equipment's shall be always worn when at work. Proper hearing protection shall be used when noise level exceeded 90dBA.

Refer GI PPE-1206 for proper hearing procedure.

FOR TRADE & SERVICES GENERAL CONTRACTING HEAVY AND LIGHT VEHICLE RENTAL



ADDRESS: IRAQ, KARBALA HEYY FARIS

EMAIL: semo.almukhayam@gmail.com

Website: <http://semo-al-mukhayam-co-ltd.business.site/>

Mobile Contact: +964 782 691-9991

+964 782 854-8866



- d) All operators of abrasive blast cleaning equipment shall be instructed and trained in the correct work methods and hazards associated with abrasive. blast and cleaning equipment and materials. Only competent and trained person (S-Chem Training) allowed to work.
- e) Ensure all protective guards and controls in place, and working properly in accordance with the manufacturer's recommendations.
- f) Suitably barricade the area to keep unauthorized personnel out of the hazardous area.
- g) Full Body harness shall be worn when working at height above 1.8 meter.
- h) Provide air supplied hood type "CE" and supplied air respirator approved by NIOSH. Working inside of Tank follow SDS system utilize Air hood type CE & respirator mask during blasting and painting.
- i) Equipment shall be properly bonded or grounded for personal protection.
- j) "Dead man" switch shall be in operatable condition.
- k) A copy of the MSDS – Material Safety Data Sheet should be obtained for all material used, studied carefully and the required safety precautions shall be implemented.

l) Only ANSI approved PPE shall be used

7. SAFETY

7.1 PPE'S

As per contract requirements, inclusive but not limited to.

- Safety Helmet
- Safety Gloves (Welding, Cotton, Working Gloves)
- Safety Harness (Full Body)
- Safety Goggles
- Safety Shoes
- Ear Plugs / Muffs (If required)
- Dust Mask (If required)
- Air Supplied Hood Type CE/ Air Supplied Respirator (For blaster / painter)

7.2 Safety Instructions

During execution of the job all measure shall be adopted to ensure safe working.

Client site management system (latest revision) will be implemented.

All personnel involved will use necessary PPE as required.

The workers will be made aware of safety requirements related to this activity.

through daily, weekly, and monthly toolbox and safety talks.

Safety notice board will be installed.

Gas testing shall be done periodically as per GI.1245 of S-Chem,

Only Qualified Standby personnel will be deputed outside tank manhole to regularly check, monitor, and recorded the personnel going in and out from tank. Only trained person (S-Chem training) allows to work inside confined space.

FOR TRADE & SERVICES GENERAL CONTRACTING HEAVY AND LIGHT VEHICLE RENTAL



ADDRESS: IRAQ, KARBALA HEYY FARIS

EMAIL: semo.almukhayam@gmail.com

Website: <http://semo-al-mukhayam-co-ltd.business.site/>

Mobile Contact: +964 782 691-9991

+964 782 854-8866



شركة سمو المخيم

للتجارة العامة والخدمات والمقاولات

Potable and fresh water will be provided to prevent dehydration especially during hot season.

Rotation of personnel working inside of tank will be implemented to prevent dehydration especially during hot season.

Proper ventilation to be applied when working inside the tank.

All safety precautions mentioned in MSDS for Sand Blasting and Painting shall be complied by.

All equipment shall be inspected and recorded by HSE - and approved by 3rd party/Client prior to use.

During transportation of the material, it shall be properly supported and tied on the trailer.

Access and good housekeeping should be maintained in all fabrication and erection areas.

When working on height, proper fall protection measure will be taken.

All access ladders and scaffolding shall be secured and tagged before use.

During internal painting VOC level to be monitored and maintain permissible VOC level.

VOC level shall be maintained as per our submitted MSDS.

Proper maintained housekeeping and disposal of *hazardous waste*



**FOR TRADE &
SERVICES
GENERAL
CONTRACTING
HEAVY AND LIGHT
VEHICLE RENTAL**



ADDRESS: IRAQ, KARBALA HEYY FARIS

EMAIL: semo.almukhayam@gmail.com

Website: <http://semo-al-mukhayam-co-ltd.business.site/>

Mobile Contact: +964 782 691-9991

+964 782 854-8866



**FOR TRADE &
SERVICES
GENERAL
CONTRACTING
HEAVY AND LIGHT
VEHICLE RENTAL**



ADDRESS: IRAQ, KARBALA HEYY FARIS

EMAIL: semo.almukhayam@gmail.com

Website: <http://semo-al-mukhayam-co-ltd.business.site/>

Mobile Contact: +964 782 691-9991

+964 782 854-8866



شركة سمو المخيم
للتجارة العامة والخدمات والمقاولات

**FOR TRADE &
SERVICES
GENERAL
CONTRACTING
HEAVY AND LIGHT
VEHICLE RENTAL**



ADDRESS: IRAQ, KARBALA HEYY FARIS

EMAIL: semo.almukhayam@gmail.com

Website: <http://semo-al-mukhayam-co-ltd.business.site/>

Mobile Contact: +964 782 691-9991

+964 782 854-8866



شركة سمو المخيم
للتجارة العامة والخدمات والمقاولات

FOR TRADE &
SERVICES
GENERAL
CONTRACTING
HEAVY AND LIGHT
VEHICLE RENTAL



ADDRESS: IRAQ, KARBALA HEYY FARIS

EMAIL: semo.almukhayam@gmail.com

Website: <http://semo-al-mukhayam-co-ltd.business.site/>

Mobile Contact: +964 782 691-9991

+964 782 854-8866



**FOR TRADE &
SERVICES
GENERAL
CONTRACTING
HEAVY AND LIGHT
VEHICLE RENTAL**



ADDRESS: IRAQ, KARBALA HEYY FARIS
EMAIL: semo.almukhayam@gmail.com
Website: <http://semo-al-mukhayam-co-ltd.business.site/>

Mobile Contact: +964 782 691-9991
+964 782 854-8866



شركة سمو المخيم
للتجارة العامة والخدمات والمقاولات

FOR TRADE &
SERVICES
GENERAL
CONTRACTING
HEAVY AND LIGHT
VEHICLE RENTAL



ADDRESS: IRAQ, KARBALA HEYY FARIS

EMAIL: semo.almukhayam@gmail.com

Website: <http://semo-al-mukhayam-co-ltd.business.site/>

Mobile Contact: +964 782 691-9991

+964 782 854-8866



**FOR TRADE &
SERVICES
GENERAL
CONTRACTING
HEAVY AND LIGHT
VEHICLE RENTAL**



ADDRESS: IRAQ, KARBALA HEYY FARIS

EMAIL: semo.almukhayam@gmail.com

Website: <http://semo-al-mukhayam-co-ltd.business.site/>

Mobile Contact: +964 782 691-9991

+964 782 854-8866



شركة سمو المخيم
للتجارة العامة والخدمات والمقاولات

FOR TRADE &
SERVICES
GENERAL
CONTRACTING
HEAVY AND LIGHT
VEHICLE RENTAL



ADDRESS: IRAQ, KARBALA HEYY FARIS

EMAIL: semo.almukhayam@gmail.com

Website: <http://semo-al-mukhayam-co-ltd.business.site/>

Mobile Contact: +964 782 691-9991

+964 782 854-8866



FOR TRADE & SERVICES GENERAL CONTRACTING HEAVY AND LIGHT VEHICLE RENTAL



Karbala Refinery Project, 35km Southern Strategic Road, Karbala City, Republic of Iraq
Tel. 07400553891

Ref No. : KRP-L-CS-ES- 4002

10.Apr.2021

Your Ref. :

To : SCOP Site Office

CC :

Pages 5

SUBJECT : Notification regarding Service Provider



Reply Required	No
Required date	N/A
Discipline	Administration

Dear Sir / Madam,

You are kindly informed that HDGSK JV has assigned SEMO AL-MUKHAYAM Company as a service provider for operating supermarket.

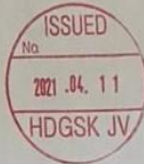
It would be very appreciated if you support for aforesaid Company due to operating supermarket.

Please herewith find out attached Commissary Operating Agreement with HDGSK JV.

Your kind understanding on the above matter is appreciated.

Sincerely yours,

Sung-Boong Park
Project Director
Karbala Refinery Project
HDGSK JV



Attachment: Copy of Contract period for Semo Al-Mukhayam Company. (4) Pages

ADDRESS: IRAQ, KARBALA HEYY FARIS

EMAIL: semo.almukhayam@gmail.com

Website: <http://semo-al-mukhayam-co-ltd.business.site/>

Mobile Contact: +964 782 691-9991

+964 782 854-8866



FOR TRADE & SERVICES GENERAL CONTRACTING HEAVY AND LIGHT VEHICLE RENTAL

Commissary Operating Agreement

Party A: HDGSK JV

Party B: Semo Al-Mukhayam Co.,Ltd

Both parties are mutually agreed as following Term & Conditions for operating Commissary in Karbala Refinery Project Site.

Party A Responsibilities:

- 1- Party A Shall provide the usable Water (Excluding Drinkable Water) and electricity for Commissary.
- 2- Party A Shall renew the commissary operating agreement Yearly basis, and if Party B cannot operate properly, Party A Shall have the right to terminate the agreement prior to one (1) month with the written notice.
- 3- Party A shall have the right to operate more commissaries as per the manpower mobilization status and designate one (1) or more operating company which can operate at camp site with his own decision, if necessary. And Party B shall not object Party A's sole decision.
- 4- Party A shall do his best efforts for prohibiting from stopping all kinds of private or personal market operating in the camp area for the purpose of private profit.



ADDRESS: IRAQ, KARBALA HEYY FARIS

EMAIL: semo.almukhayam@gmail.com

Website: <http://semo-al-mukhayam-co-ltd.business.site/>

Mobile Contact: +964 782 691-9991

+964 782 854-8866



FOR TRADE & SERVICES GENERAL CONTRACTING HEAVY AND LIGHT VEHICLE RENTAL

Party B Responsibilities:

- 1- The company Change Name from Bilad Mabin Al-Nahrayn to Semo Al-Mukhayam Co.,Ltd for General Trade & Services General Contracting.
- 2- Party B shall Operate Commissary Daily basis for Iraqi/Bangladeshi/India /other Nationalities from (08:00am – 22:00 pm, no holiday)
- 3- Party B shall prepare Necessary Furniture Equipment's & other necessary items for the proper establishment & Operation of the Commissary.
- 4- Party B shall provide a suitable and reasonable price to the customers, and shall do his best efforts for supplying with the best price.
- 5- Delivery of the Commissary items including security clearance.
- 6- Trash & Waste will be carried and disposed by the party B's responsibility.
- 7- Other things related with the operation for commissary shall be the party B responsibility.
- 8- Party B Shall provide the building for commissary.

The Details of Work Scope are as below Table:

Description	Formation	
	Party A	Party B
A – Temporary Facilities:		
1- Accommodation / Catering	0 (Note 1)	
2- Office.		0
3- Warehouse & Storage		0
4- Rest House / Toilet		0
5- Other temporary facilities, if necessary.		0
6- Temporary fencing and lighting		0



ADDRESS: IRAQ, KARBALA HEYY FARIS
EMAIL: semo.almukhayam@gmail.com
Website: <http://semo-al-mukhayam-co-ltd.business.site/>

Mobile Contact: +964 782 691-9991
+964 782 854-8866



FOR TRADE & SERVICES GENERAL CONTRACTING HEAVY AND LIGHT VEHICLE RENTAL

B – Equipment and Vehicle, Maintenance/Repair work:		
1- Vehicle etc.		0
2- Maintenance / Repair Work		0
3- Compliance with local regulation including local regulatory bodies.		0
C – Utilities:		
1- Water & Electricity		
1) Drinking Water	(Note 2)	0
2) Water required for temporary facilities	0	
2- Electricity		
1) Electricity Connection.	0(Note 3)	
2) Electricity supply	0	
D – Manpower Mobilization & Control:		
1- Labor control & Cost		0
E – General Operation & Supply		
1- Daily transportation (Camp ↔ Job Site).		0
2- Guard / Security for the Theft / Damage		0
3- Garbage disposal		0
4- Communication Services as Telex / telephone/ Internet relating to the work for Subcontractor's Work.		0
5- Identification Card / Badge (Return base)		0
6- Fire Extinguisher for Commissary.		0
F – Insurance		
		0
G – taxes and Duites		
		0



ADDRESS: IRAQ, KARBALA HEYY FARIS
EMAIL: semo.almukhayam@gmail.com
Website: <http://semo-al-mukhayam-co-ltd.business.site/>

Mobile Contact: +964 782 691-9991
+964 782 854-8866



FOR TRADE & SERVICES GENERAL CONTRACTING HEAVY AND LIGHT VEHICLE RENTAL

Note:

- 1- Camp facilities will be provided by Party A. The space/ Location Shall be arranged by Part A and the expense for accommodation and catering will be charged to Party B as attached table below.
- 2- The connection & expense for water (except drinking water) will be done by Party A.
- 3- The connection and expense for electricity will be done by Party A.

Type	Daily Rate per person	
	Accommodation	Catering
Staff / TJE (2 person/1 room)	USD 7 \$	USD 9 \$
Labor / TUL (6 person/ 1 room)	USD 5 \$	USD 7 \$



Party A

Sung-Boong Park
Project Director
Karbala Refinery Project
HDGSK JV

Party B

Murad Rwaieh Ferwoon
General Manager
Semo ALMukhayam Co Ltd

ADDRESS: IRAQ, KARBALA HEYY FARIS
EMAIL: semo.almukhayam@gmail.com
Website: <http://semo-al-mukhayam-co-ltd.business.site/>

Mobile Contact: +964 782 691-9991
+964 782 854-8866



FOR TRADE & SERVICES GENERAL CONTRACTING HEAVY AND LIGHT VEHICLE RENTAL

LOWER-TIER SUBCONTRACT AGREEMENT

FOR

MANPOWER SUPPLY FOR IRAQ BASRA REFINERY UPGRADING PROJECT

OWNER..... South Refineries Company (SRC)
CONTRACTOR..... JGC Corporation (JGC)
GENERAL SUBCONTRACTOR..... Hyundai Engineering and Construction Co., Ltd. (HDEC)
SUBCONTRACTOR..... 77 Insaat ve Taahhut A.S.
LOWER-TIER SUBCONTRACTOR..... Semo Al-Mukhayam Co.Ltd.
PROJECT.....Iraq Basra Refinery Upgrading Project
SITE.....Basra, Iraq

1-) SCOPE OF WORK ;

Lower-Tier Subcontractor will provide 77 Insaat with manpower supply services on monthly basis for skilled and unskilled worker at Construction Site of Basra Refinery Upgrading Project.

2-) TIME FOR COMPLETION ;

- Duration : Duration of this manpower supply services is in monthly basis and may take until 31 March 2025 as per the request of 77 INSAAT.

3-) TERMS OF PAYMENT ;

- Payment Schedule shall be as follows ; Lower-Tier Subcontractor shall submit payment request including related proof documents at the beginning of each month. The Contractor shall approve rental payment certificate within 20 days and payment amount will be transferred within 60 days after approval of rental payment certificate.

4-) NOTICES;

To the Subcontractor ;

77 Insaat ve Taahhut A.S.

Attention : Mr. Cuneyd KAYA

Mobile : +90-530- 617 03 90

E mail : cuneytkaya@77construction.com

ADDRESS: IRAQ, KARBALA HEYY FARIS

EMAIL: semo.almukhayam@gmail.com

Website: <http://semo-al-mukhayam-co-ltd.business.site/>

Mobile Contact: +964 782 691-9991

+964 782 854-8866



**FOR TRADE &
SERVICES
GENERAL
CONTRACTING
HEAVY AND LIGHT
VEHICLE RENTAL**

ADDRESS: IRAQ, KARBALA HEYY FARIS

EMAIL: semo.almukhayam@gmail.com

Website: <http://semo-al-mukhayam-co-ltd.business.site/>

Mobile Contact: +964 782 691-9991

+964 782 854-8866



FOR TRADE & SERVICES GENERAL CONTRACTING HEAVY AND LIGHT VEHICLE RENTAL

6-) TERMINATION OF THE CONTRACT;

- Termination of the Lower-Tier Subcontract ; Subcontractor has right to terminate the contract if one of the following authorities Owner(SRC), Contractor (JGC), General Subcontractor (HDEC) or Subcontractor (77 INSAAT) isn't satisfied with the Lower-Tier Subcontractor's company profile or HSE/Quality conditions or work performance or working conditions.

7-) ARBITRATION;

- In case of arbitration; Baghdad Courts shall be the place for arbitration.

8-) LANGUAGE ;

- Language of the contract shall be in English.

This agreement has been prepared in two copies and signed by both parties on 05 /09 /2022.

For and on behalf of

77 INSAAT VE TAAHHUT A.Ş.


Name : Guneyda KAYA
Title : General Director
77 INSAAT VE TAAHHUT A.Ş. İRANCI YUKSEKLIK Sokak
Seifali MAHRANIE İSTANBUL
No: 0216.9997111 Fax: 0216.313.00.30
Tel: 0216.9997111 No.001 077 7247
ANADOLUKURUMLARI V.D. Ticaret Sic. NO: 247023
Mersis No: 000 1077724700028

For and on behalf of

Semo Al-Mukhayam Co.Ltd


Name : Faris Sabbar Abdulsada

Title : Admin Manager

ADDRESS: IRAQ, KARBALA HEYY FARIS

EMAIL: semo.almukhayam@gmail.com

Website: <http://semo-al-mukhayam-co-ltd.business.site/>

Mobile Contact: +964 782 691-9991

+964 782 854-8866



FOR TRADE & SERVICES GENERAL CONTRACTING HEAVY AND LIGHT VEHICLE RENTAL



F.C.C Basrah Upgrading Refinery Project IBRU , Basrah Al-Shuabia

Ref No. : SEMO-R-2022-004

DATE : 12TH NOV 2022

YOUR Ref. : HFIBRU-D-002

SUBJECT: SUPPLY CONTRACT

First party : SEMO AL-MUKHAYAM Co.

Second Party : HYUNDAI ENGINEERING & CONSTRUCTION.

This contract celebrated this partnership between the two mention companies under the following terms:

- 1- The first party is the supplier for the second party.
- 2- During the contract's timeline, (1 Year's) first party will provide all required materials and rentals for the second party, within the highest attention to the wanted qualities and quantities asked by the second party.
- 3- The first party will provide all needed goods whether they are construction materials or electric supplies and so.
- 4- The first party will provide the second party with the needed vehicles (heavy – light) in case they were ordered by the second party.
- 5- This contract is valid for 1 year the contract date 12TH NOV 2022 to 12TH NOV 2023. And at the date of expiration this contract can be renewed with the agreement of both parties.

Note:

- The payment will be received on monthly basis invoice in which all the received materials from the first party listed.
- The invoice should be stamped and contain a signature that belongs to our company.
- The first party will receive the amount of money in the invoice by the bank account that is showed in the invoice.



MURAD RWAH FAROON
General Manager



Second party signature
HYUNDAI E&C
KWON, GISOO
General Affairs Manager

ADDRESS: IRAQ, KARBALA HEYY FARIS

EMAIL: semo.almukhayam@gmail.com

Website: <http://semo-al-mukhayam-co-ltd.business.site/>

Mobile Contact: +964 782 691-9991

+964 782 854-8866



FOR TRADE & SERVICES GENERAL CONTRACTING HEAVY AND LIGHT VEHICLE RENTAL

SEMO AL-MUKHAYAM Co. Ltd.
FOR TRADE & SERVICES
GENERAL CONTRACTING



شركة سمو المخيم
للتجارة والخدمات
والمقاولات العامة المحدودة

RENTAL AGREEMENT

AGREEMENT No.: SM-2022-789
Date: 28/8/2022

This agreement was made for and between:
CONTRACTOR: SEMO ALMUKHAYAM LTD CO
SUPPLIER: DAESUN E&C

- 1- Type of agreement: **Light vehicles rental**
- 2- Rental period: 1 year.
- 3- The contract period is mentioned on no.2 it can be renewed by mutual agreement between two parties.
- 4- The contractor has the right to terminate this rental agreement with written notice before 14 days of demobilization when work is on slowdown or going to finish.
- 5- Mobilization and demobilization to the site with gate pass and security clearance will be provided by supplier.
- 6- Diesel supply by contractor. Petrol supply by supplier.
- 7- Breakdown maintenance should be fixed within 3 hours and if it will take more than 3 hours, replacement should be provided during maintenance.
- 8- Invoice should be provided on end of every month.
- 9- Contractor should pay the payment within 30 days by the bank transfer after receiving the invoice.
- 10- Cars to be used within the FCC project only. Special request can be made upon contractor request.



CONTRACTOR

Choi SungHoon
Admin Manager
For and behalf of
DAESUN E&C
Iraq Basrah Refinery Upgrading Project



SUPPLIER

Murad Rwaih Faroon
General Manager
For and behalf of
SEMO ALMUKHAYAM LTD CO
Iraq, Basrah, Alsarraji

ADDRESS: IRAQ, KARBALA HEYY FARIS

EMAIL: semo.almukhayam@gmail.com

Website: <http://semo-al-mukhayam-co-ltd.business.site/>

Mobile Contact: +964 782 691-9991

+964 782 854-8866





FOR TRADE & SERVICES GENERAL CONTRACTING HEAVY AND LIGHT VEHICLE RENTAL



DAESHIN PLANT CONSTRUCTION CO., LTD.

735, Yeosu-sandaek-ro, Yeosu-si Jeonnam, KOREA 59614
TEL: 82-61-685-6165 FAX: 82-61-686-6165 E-MAIL: ds6165@daeshinplant.com

RENTAL AGREEMENT

Agreement No : DSA-2022-RI-HE-001

This rental agreement is made on 17, July 2022 by and between

First Party: DAESHIN PLANT Co., Ltd hereinafter called the "CONTRACTOR"

Second Party: SEMO AL-MUKHAYAM Co., Ltd hereinafter called the "SUPPLIER"

Whereas the SUPPLIER has offered to execute the work specified on the "Scope of Work" of the following conditions and the CONTRACTOR has accepted the SUPPLIER's execution and completion

SCOPE OF WORKS

1. The SUPPLIER shall execute the following items of work under the project

Item No.	Description of Works
1	Heavy Equipment Rental
2	Light Vehicle Rental

CONTRACTOR



LEE NAM
Project Director
For and on Behalf of
DAESHIN PLANT Co., Ltd
Iraq Basrah Refinery Upgrading Project
PURCHASE ORDER

SUPPLIER



Faris Sabbat Al-Abshaida
Admin Manager
For and on Behalf of
SEMO AL-MUKHAYAM Co., Ltd
IRAQ BASRA. AL-SARRAJ

ADDRESS: IRAQ, KARBALA HEYY FARIS

EMAIL: semo.almukhayam@gmail.com

Website: <http://semo-al-mukhayam-co-ltd.business.site/>

Mobile Contact: +964 782 691-9991

+964 782 854-8866



FOR TRADE & SERVICES GENERAL CONTRACTING HEAVY AND LIGHT VEHICLE RENTAL

SEMO AL-MUKHAYAM Co. Ltd.
FOR TRADE & SERVICES
GENERAL CONTRACTING



شركة سمو المخيم
للتجارة والخدمات
والمقاولات العامة المحدودة

RENTAL AGREEMENT

AGREEMENT No. :SM-2022-735
Date: 15/8 2022

This agreement was made for and between:

CONTRACTOR: SEMO ALMUKHAYAM LTD CO
SUPPLIER: DAEAH E&C

- 1- Type of agreement: **Light vehicles rental**
- 2- Rental period: 1 year.
- 3- The contract period is mentioned on no.2 it can be renewed by mutual agreement between two parties.
- 4- The contractor has the right to terminate this rental agreement with written notice before 14 days of demobilization when work is on slowdown or going to finish.
- 5- Mobilization and demobilization to the site with gate pass and security clearance will be provided by supplier.
- 6- Diesel supply by contractor. Petrol supply by supplier.
- 7- Breakdown maintenance should be fixed within 3 hours and if it will take more than 3 hours, replacement should be provided during maintenance.
- 8- Invoice should be provided on end of every month.
- 9- Contractor should pay the payment within 30 days by the bank transfer after receiving the invoice.
- 10- Cars to be used within the FCC project only. Special request can be made upon contractor request.

CONTRACTOR

Kwan Ung, K&M
Site Manager
For and behalf of
DAEAH E&C
Iraq Basrah Refinery Upgrading Project



SUPPLIER

Murad Rwaih Farooq
General Manager
For and behalf of
SEMO ALMUKHAYAM LTD CO
Iraq, Basrah, Alsarraji



SEMO AL-MUKHAYAM CO.Ltd. Basrah Branch Office / +964 782 691-9991 +964 783 577-0462



ADDRESS: IRAQ, KARBALA HEYY FARIS

EMAIL: semo.almukhayam@gmail.com

Website: <http://semo-al-mukhayam-co-ltd.business.site/>

Mobile Contact: +964 782 691-9991

+964 782 854-8866



FOR TRADE & SERVICES GENERAL CONTRACTING HEAVY AND LIGHT VEHICLE RENTAL

SEMO AL-MUKHAYAM Co. Ltd.
FOR TRADE & SERVICES
GENERAL CONTRACTING



شركة سمو المخيم
للتجارة والخدمات
والمقاولات العامة المحدودة

RENTAL AGREEMENT

Agreement No.: IBRU-23-AG-0004

This rental agreement is made on 2nd, JAN 2023 by and between

First Party: MUKYUNG ENGINEERING AND CONSTRUCTION CO.,LTD hereinafter called the "CONTRACTOR"

Second Party: SEMO AL-MUKHAYAM Co., Ltd hereinafter called the "SUPPLIER"

Whereas the SUPPLIER has offered to execute the work specified on the "Scope of Work" of the following conditions and the CONTRACTOR has accepted the SUPPLIER's execution and completion

SCOPE OF WORKS

1. The SUPPLIER shall execute the following items of work under the project

Item No.	Description of Works
1	Light Vehicle Rental

TERMS AND CONDITIONS:

1. Rental Period: 1 Year.
2. The contract period is mentioned on no. 1 and it can be renewed by mutual agreement between two parties
3. The contractor has the right to terminate this rental agreement (PO) with written notice before 14 days of demobilization when work is a slowdown or going to finish
4. Mobilization /Demobilization to the site with a gate pass and security clearance will be provided by the supplier
5. Diesel supply by contractor

ADDRESS: IRAQ, KARBALA HEYY FARIS

EMAIL: semo.almukhayam@gmail.com

Website: <http://semo-al-mukhayam-co-ltd.business.site/>

Mobile Contact: +964 782 691-9991

+964 782 854-8866



شركة سمو المخيم
للتجارة العامة والخدمات والمقاولات

FOR TRADE &
SERVICES
GENERAL
CONTRACTING
HEAVY AND LIGHT
VEHICLE RENTAL

SEMO AL-MUKHAYAM Co. Ltd.
FOR TRADE & SERVICES
GENERAL CONTRACTING



شركة سمو المخيم
للتجارة والخدمات
والمقاولات العامة المحدودة

6. Breakdown maintenance should be fixed within 3 hours and if it will take more than 3 hours, replacement should be provided during maintenance
7. Invoice should be provided before the 30th of each month.
8. Contractor should pay the payment within 30 days by the bank transfer after receiving the proforma invoice.

CONTRACTOR

Jeongseob Kim 02-Jul-2023
Site Manager
For and on Behalf of
MUKYUNG ENGINEERING AND
CONSTRUCTION CO.,LTD



Faris Sabbar Abdulsada
Admin Manager
For and on Behalf of

SEMO AL-MUKHAYAM Co., Ltd

ADDRESS: IRAQ, KARBALA HEYY FARIS

EMAIL: semo.almukhayam@gmail.com

Website: <http://semo-al-mukhayam-co-ltd.business.site/>

Mobile Contact: +964 782 691-9991

+964 782 854-8866



FOR TRADE & SERVICES GENERAL CONTRACTING HEAVY AND LIGHT VEHICLE RENTAL

SEMO AL-MUKHAYAM Co. Ltd.
FOR TRADE & SERVICES
GENERAL CONTRACTING



شركة سمو المخيم
للتجارة والخدمات
والمقاولات العامة المحدودة

RENTAL AGREEMENT

AGREEMENT No.:SM-2022-763
Date: 18/8/2022

This agreement was made for and between:

CONTRACTOR: AL DHAMEEN ENGINEERING COMPANY
SUPPLIER: SEMO ALMUKHAYAM LTD CO

- 1- Type of agreement: **GARBAGE TRUCK**
- 2- Rental period: 6 Months.
- 3- The contract period is mentioned on no.2 it can be renewed by mutual agreement between two parties.
- 4- The contractor has the right to terminate this rental agreement with written notice before 14 days of demobilization when work is on slowdown or going to finish.
- 5- Mobilization and demobilization to the site with gate pass and security clearance will be provided by supplier.
- 6- The agreed rental amount is **80\$ per trip**.
- 7- Breakdown maintenance should be fixed within 3 hours and if it will take more than 3 hours, replacement should be provided during maintenance.
- 8- Invoice should be provided on end of every month.
- 9- Contractor should pay the payment within 30 days by the bank transfer after receiving the invoice.



CONTRACTOR

Fu Rui
Admin manager
For and behalf of
Al Dhameen Engineering Company
Iraq Basrah Refinery Upgrading Project



SUPPLIER

Murad Rwaih Faroon
General Manager
For and behalf of
SEMO ALMUKHAYAM LTD CO
Iraq, Basrah, Alsarraji

ADDRESS: IRAQ, KARBALA HEYY FARIS

EMAIL: semo.almukhayam@gmail.com

Website: <http://semo-al-mukhayam-co-ltd.business.site/>

Mobile Contact: +964 782 691-9991

+964 782 854-8866



FOR TRADE & SERVICES GENERAL CONTRACTING HEAVY AND LIGHT VEHICLE RENTAL

SEMO AL-MUKHAYAM LTD CO
Basra: Al-Sarraj
Basra: Iraq
Tel: +96478
Fax: +92 2 6442 9853
TAX Identification Number: 902030519



Company Name : Semo Al-Mukhayam
Address : IRAQ BASRA, Al-Sarraj
Contact : 07828919991-07835770462
Attn : Sang-Yeob Na

Purchase Order No. : SM-2022-608
Date : 28th Jun. 2022
Please mention this NO in all future correspondence

RENTAL AGREEMENT

We are pleased to place an order with you for the goods described below.
The order shall be subject to the terms and conditions set out below and attached.
Please sign and return the enclosed copy of this order as confirmation of your acceptance of it within a week,
otherwise this order is regarded accepted.

1. GOODS : Light Vehicles
2. DELIVERY DATE : 28th JUN 2022
3. PAYMENT TERMS : Invoice will be sent every 1st of the month
4. CONTACT POINT : Sang-Yeob Na (Site Manager) T: +82-70-4324-3001

Terms and conditions:

- 1 Regular maintenance shall be performed without omission
- 2 Subcontractor is responsible for equipment maintenance
- 3 In the event of an accident, loss, theft or damage to the Rental Contractor notifies Subcontractor as soon as possible and the cost will be charged to the party who caused the trouble
- 4 as soon as possible and the cost will be charged to the party who caused the trouble
- 5 Mechanical breakdown will be repaired by Subcontractor, rental will not be charged during the breakdown.

SUPPLIER



For and on behalf of
Semo Al-Mukhayam
IRAQ BASRA, Al-Sarraj

PURCHASER



Sang-Yeob Na,
Site Manager
For and on behalf of
APN Co., Ltd.
Iraq Basrah Refinery Upgrade Project

* Copy of this agreement must be sent to Buyer with Supplier's company stamp and signature by fax or email

ADDRESS: IRAQ, KARBALA HEYY FARIS
EMAIL: semo.almukhayam@gmail.com
Website: <http://semo-al-mukhayam-co-ltd.business.site/>

Mobile Contact: +964 782 691-9991
+964 782 854-8866



FOR TRADE & SERVICES GENERAL CONTRACTING HEAVY AND LIGHT VEHICLE RENTAL

SEMO AL-MUKHAYAM Co. Ltd.
FOR TRADE & SERVICES
GENERAL CONTRACTING



شركة سمو المخيم
للتجارة والخدمات
والمقاولات العامة المحدودة

RENTAL AGREEMENT

Agreement No.: IBRU-23-AG-0017

This rental agreement is made on 3rd, JAN 2023 by and between

First Party: KUMGA Co. hereinafter called the "CONTRACTOR"

Second Party: SEMO AL-MUKHAYAM Co., Ltd hereinafter called the "SUPPLIER"

Whereas the SUPPLIER has offered to execute the work specified on the "Scope of Work" of the following conditions and the CONTRACTOR has accepted the SUPPLIER's execution and completion

SCOPE OF WORKS

1. The SUPPLIER shall execute the following items of work under the project

Item No.	Description of Works	Type of Vehicle
1	Light Vehicle Rental	Santa fee 2015 Model

TERMS AND CONDITIONS:

1. Rental Period: 1 Year.
2. The contract period is mentioned on no. 1 and it can be renewed by mutual agreement between two parties
3. The contractor has the right to terminate this rental agreement (PO) with written notice before 14 days of demobilization when work is a slowdown or going to finish
4. Mobilization /Demobilization to the site with a gate pass and security clearance will be provided by the supplier
5. Diesel supply by contractor
6. Breakdown maintenance should be fixed within 3 hours and if it will take more than 3

ADDRESS: IRAQ, KARBALA HEYY FARIS

EMAIL: semo.almukhayam@gmail.com

Website: <http://semo-al-mukhayam-co-ltd.business.site/>

Mobile Contact: +964 782 691-9991

+964 782 854-8866



شركة سمو المخيم
للتجارة العامة والخدمات والمقاولات

FOR TRADE &
SERVICES
GENERAL
CONTRACTING
HEAVY AND LIGHT
VEHICLE RENTAL



SEMO AL-MUKHAYAM Co. Ltd.
FOR TRADE & SERVICES
GENERAL CONTRACTING

شركة سمو المخيم
للتجارة والخدمات
والمقاولات العامة المحدودة

- hours, replacement should be provided during maintenance
7. Invoice should be provided before the 30th of each month.
 8. Contractor should pay the payment within 30 days by the bank transfer after receiving the proforma invoice.



BAEK
Site Manager
For and on Behalf of
KUMGA CO.



Faris Sabbar Abdulsada
Admin Manager
For and on Behalf of
SEMO AL-MUKHAYAM Co., Ltd

ADDRESS: IRAQ, KARBALA HEYY FARIS
EMAIL: semo.almukhayam@gmail.com
Website: <http://semo-al-mukhayam-co-ltd.business.site/>

Mobile Contact: +964 782 691-9991
+964 782 854-8866



FOR TRADE & SERVICES GENERAL CONTRACTING HEAVY AND LIGHT VEHICLE RENTAL

LOWER-TIER SUBCONTRACT AGREEMENT

FOR

EQUIPMENT RENTAL FOR IRAQ BASRA REFINERY UPGRADING PROJECT

OWNER..... South Refineries Company (SRC)
CONTRACTOR..... JGC Corporation (JGC)
GENERAL SUBCONTRACTOR..... Hyundai Engineering and Construction Co., Ltd. (HDEC)
SUBCONTRACTOR..... 77 Insaat ve Taahhut A.S.
LOWER-TIER SUBCONTRACTOR..... Semo Al-Mukhayam Co. Ltd.
PROJECT..... Iraq Basra Refinery Upgrading Project
SITE..... Basra, Iraq

1-) SCOPE OF WORK ;

Lower-Tier Subcontractor will provide 77 Insaat with equipment rental services on Monthly basis for the equipment listed below at Construction Site of Basra Refinery Upgrading Project.

Item No.	DESCRIPTION MAKE AND MODEL	CAPACITY
1.	Dump Truck	20 m3
2.	Air Comperssor	88 CFM, 6-8 Bar

Note: Scope of Work of Dump trucks include to work both inside and outside FCC.

2-) TIME FOR COMPLETION ;

- Duration : Duration of this equipment rental services is in Monthly basis and may take until 31 March 2025 as per the request of 77 INSAAT.

3-) TERMS OF PAYMENT ;

- Payment Schedule shall be as follows ; Lower-Tier Subcontractor shall submit rental payment request including related proof documents at the beginning of each month. The Contractor shall approve rental payment certificate within 20 days and payment amount will be transferred within 120 days after approval of rental payment certificate.
- The Subcontractor shall calculate & approve rental payment request depending on the full and partial month working days of each equipment received.
- Monthly payment for each equipment shall be calculated as follows:

$$\text{Monthly Payment} = \frac{\text{Monthly Rate} \times \text{Working Days}}{30}$$

ADDRESS: IRAQ, KARBALA HEYY FARIS

EMAIL: semo.almukhayam@gmail.com

Website: <http://semo-al-mukhayam-co-ltd.business.site/>

Mobile Contact: +964 782 691-9991

+964 782 854-8866



FOR TRADE & SERVICES GENERAL CONTRACTING HEAVY AND LIGHT VEHICLE RENTAL

- Equipment rates include all lower-tier subcontractor's equipment expenses and cost including, but not limited to mobilization and demobilization, maintenance, repairs, lube oil and lubrication, spare parts, insurance and taxes associated with the supply and operation of the equipment, overheads and profit, including driver and/or equipment operators.
- Lower-Tier Subcontractor is responsible to provide equipment without any malfunction or failure on any part or piece of the equipment prior to deliver the equipment. Any equipment failed safety inspection of 77 INSAAT, HDEC, Contractor or Owner has to be replaced immediately by Subcontractor.
- Lower-Tier Subcontractor is responsible to provide maintenance to the equipments in regular basis.
- Lower-Tier Subcontractor is responsible to provide skilled driver/ operator for the equipments and vehicles. Any damage done to the equipment or vehicle due to the driver / operator failure, will not be compensated by the Contractor.
- Lower-Tier Subcontractor is responsible to provide necessary documentation in order to receive access permit. Any delay due to the missing necessary documentation will be Subcontractor's responsibility.
- HSE is the main issue for 77 INSAAT, for HDEC, for Contractor and for the OWNER. For this reason, Lower-Tier Subcontractor shall obey HSE rules of the Subcontractor exactly. If there is any accident or damage, Lower-Tier Subcontractor shall be responsible for all kind of expenses resulting from HSE according to HDEC rules and governmental regulations. Any mistake made by the sub-contractor's administration or his employees and resulting in accidents bear the full responsibility of the subcontractor, and it is determined whether the accidents are caused by the subcontractor or not by agreement between the two parties to the contract and when there is no agreement, the HSE report is used as a source for identifying the wrongdoer.
- All operators & drivers shall put on Personal Protective Equipment including but not limited to helmet, reflective vest/jacket, safety goggles and safety shoes at the site.
- Lower-Tier Subcontractor shall obey operational procedure of subcontractor exactly. Lower-Tier Subcontractor shall start working 15 minutes ago in order to make daily simple check (tyres, oil + water levels) for equipment and tool box meeting for operators and drivers.
- Lower-Tier Subcontractor shall obey working hours. Working hours shall be except summer season and Ramadan period as follows; 7:00 -18:00, between 12:00 and 13:00 lunch time. In the summer season, subcontractor may change the working hours, but the total of daily working hours shall be minimum 10 hours. In Ramadan, subcontractor also may change the working hours, but the total of daily working hours shall be minimum 10 hours.
- Friday shall be official holiday. If it is needed to catch daily progress, Lower-Tier Subcontractor shall work overtime or arrange night shift.
- Security for the equipment and tools owned by Lower-Tier Subcontractor shall be under Lower-Tier Subcontractor's responsibility. Lower-Tier Subcontractor's Equipment shall be parked in designated park area when they are in idle.
- Lower-Tier Subcontractor shall prepare all Gate Pass Documents for his labors, material and equipment and submit to 77 Insaat for Signature.
- Lower-Tier Subcontractor shall provide Inspection Certificate and Licences for his equipment
- Lower-Tier Subcontractor can not transfer any portion of the work from his scope to another Lower-Tier Subcontractor without confirmation of the Subcontractor.

ADDRESS: IRAQ, KARBALA HEYY FARIS

EMAIL: semo.almukhayam@gmail.com

Website: <http://semo-al-mukhayam-co-ltd.business.site/>

Mobile Contact: +964 782 691-9991

+964 782 854-8866



FOR TRADE & SERVICES GENERAL CONTRACTING HEAVY AND LIGHT VEHICLE RENTAL

- It is not unforeseeable and unpredictable for the Lower-Tier Subcontractor that the current COVID-19 outbreak continues during performance of the Works. The Lower-Tier Subcontractor shall take all precautions to prevent infections and complete the Works within the Time for Completion under the Subcontract with the Lower-Tier Subcontractor's full responsibilities. For the avoidance of any doubts, the Lower-Tier Subcontractor shall not have the right to request extension of time and compensation for any costs and expense incurred due to Covid-19.
All Operators and Drivers of Lower-Tier Subcontractor shall have Covid-19 Vaccination Certificate.
Cost of PCR Tests from mobilization and Cost of PCR test for returning back from vacation of Lower-Tier Subcontractor's Personnel shall be under the responsibility of Lower-Tier Subcontractor.
- All equipment, workshops, warehouse, offices of the Lower-Tier Subcontractor shall be equipped with fire extinguishers.
All Operators and Drivers of Lower-Tier Subcontractor shall have Covid-19 Vaccination Certificate.
Cost of PCR Tests from mobilization and Cost of PCR test for returning back from vacation of Lower-Tier Subcontractor's Personnel shall be under the responsibility of Lower-Tier Subcontractor.
- All equipment, workshops, warehouse, offices of the Lower-Tier Subcontractor shall be equipped with fire extinguishers.

7-) SUBCONTRACTOR'S RESPONSIBILITIES;

- Subcontractor is responsible maintain, secure the equipment provided by Lower-Tier Subcontractor.
- Subcontractor shall inform the Lower Tier Subcontractor 1 week before the effective date off each call off about the number of equipment to be rented and rental period.
- Subcontractor is going to provide fuel for the equipment/vehicles during the rental period.
- Subcontractor is going to provide accommodation in HDEC's Camp for only the operators of equipment during the rental period. However, Driver of Vehicles and Maintenance Worker for Equipment shall not stay at HDEC's Camp.
- If Subcontractor or Contractor is not satisfied with performance of any personnel, Lower-Tier Subcontractor shall replace it or him with the new one.
- As for catering, HDEC will serve 3 meals per day to the Lower-Tier Subcontractor's Operator at the canteen in the camp facilities which is located at site, but will serve lunch only to the Driver of Vehicles (daily commuter) not staying in HDEC's camp.

8-) NOTICES;

To the Subcontractor ;
77 Insaat ve Taahhut A.S.
Attention : Mr. Cunejd KAYA
Mobile : +90-530- 617 03 90
E mail : cunejdkaya@77construction.com

ADDRESS: IRAQ, KARBALA HEYY FARIS
EMAIL: semo.almukhayam@gmail.com
Website: <http://semo-al-mukhayam-co-ltd.business.site/>

Mobile Contact: +964 782 691-9991
+964 782 854-8866



FOR TRADE & SERVICES GENERAL CONTRACTING HEAVY AND LIGHT VEHICLE RENTAL

To the Lower-Tier Subcontractor ;
Semo Al-Mukhayam Co. Ltd.
Attention : Mr. Faris Sabbar Abdulsada
Mobile : +964 783 577 04 62
E mail : semo.almukhayam@gmail.com@gmail.com

9-) TERMINATION OF THE CONTRACT;

- Termination of the Lower-Tier Subcontract ; Subcontractor has right to terminate the contract if one of the following authorities Owner(SRC), Contractor (JGC), General Subcontractor (HDEC) or Subcontractor (77 INSAAT) isn't satisfied with the Lower-Tier Subcontractor's company profile or HSE/Quality conditions or work performance or working conditions.

10-) ARBITRATION;

- In case of arbitration; Baghdad Courts shall be the place for arbitration.

11-) LANGUAGE ;

- Language of the contract shall be in English.

This agreement has been prepared in two copies and signed by both parties on 14/02/2023.

For and on behalf of
77 INSAAT VE TAAHHUT A.S.

For and on behalf of
Semo Al-Mukhayam Co.Ltd.

Name : Cuneyd KAYA
Title : General Director

77 İnşaat ve Taahhut A.Ş.
شركة الإنشاءات والتعهدات للبناء - العراق

Name : Faris Sabbar Abdulsada
Title : Administrator



ADDRESS: IRAQ, KARBALA HEYY FARIS
EMAIL: semo.almukhayam@gmail.com
Website: <http://semo-al-mukhayam-co-ltd.business.site/>

Mobile Contact: +964 782 691-9991
+964 782 854-8866